

T B S E R I E S

indelB

trouble shooting

TB_31_41_(DC)_TS_30-11-2018

T B S E R I E S

3	ERROR E1
4	ERROR E2
5	ERROR E3
6	ERROR E4
7	ERROR E5
8	ERROR E6
9	HOW TO REPLACE THE TEMPERATURE PROBE
10 - 11	HOW TO REPLACE THE FAN
12	HOW TO REPLACE THE LIGHT BULB
13 - 14	HOW TO REPLACE THE ECU
15	HOW TO REPLACE THE DISPLAY
16	HOW TO REPLACE THE LID

indelB

TB_31_41_(DC)_TS_30-11-2018

- ERROR E1: Battery protection cut-out

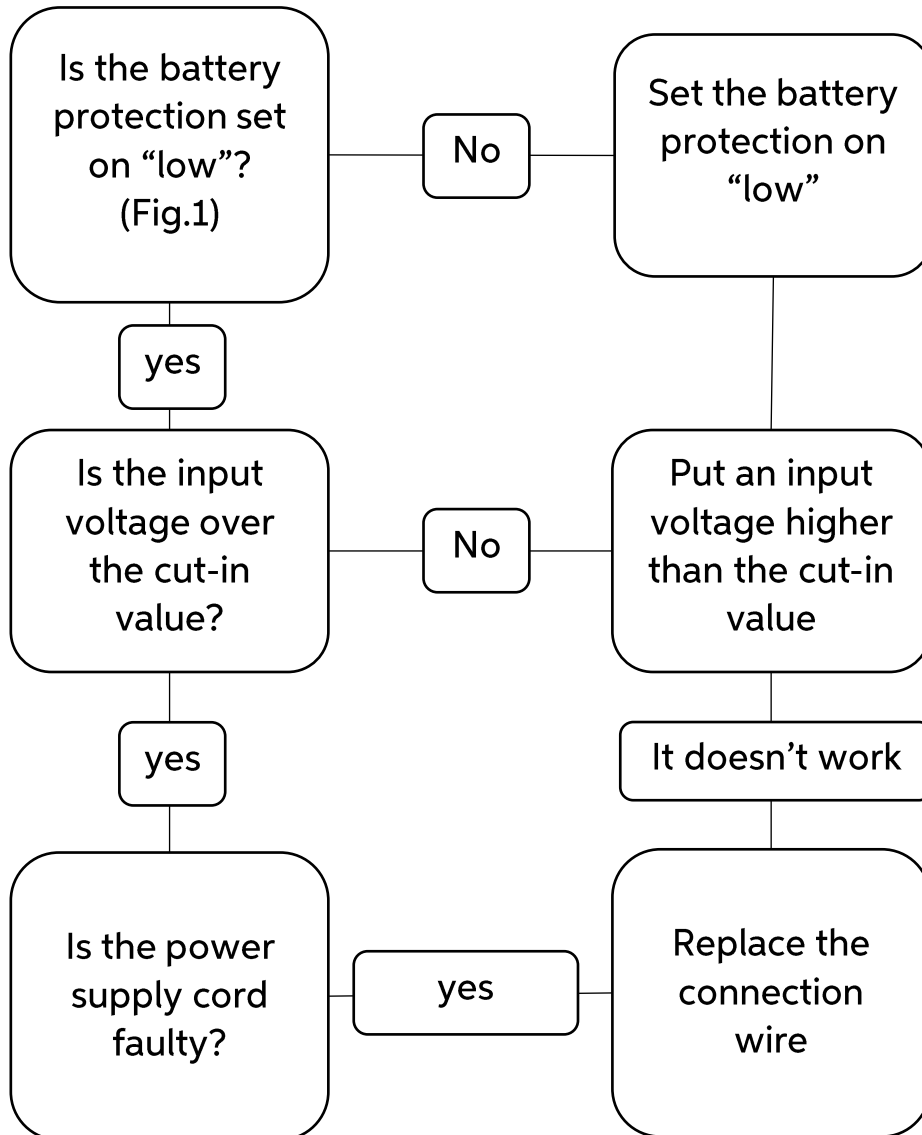


Fig. 1

- **ERROR E2: Fan over-current cut-out**

This error is caused by an over-current that arrived at the fan. In this case you must replace the fan (see “How to replace the fan”).

- ERROR E3: Motor start error

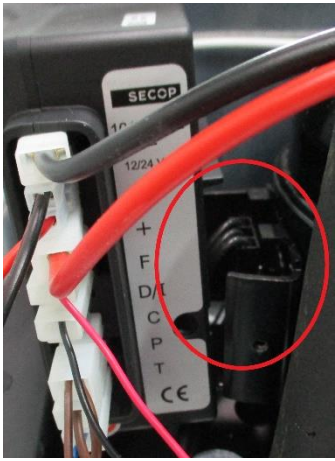
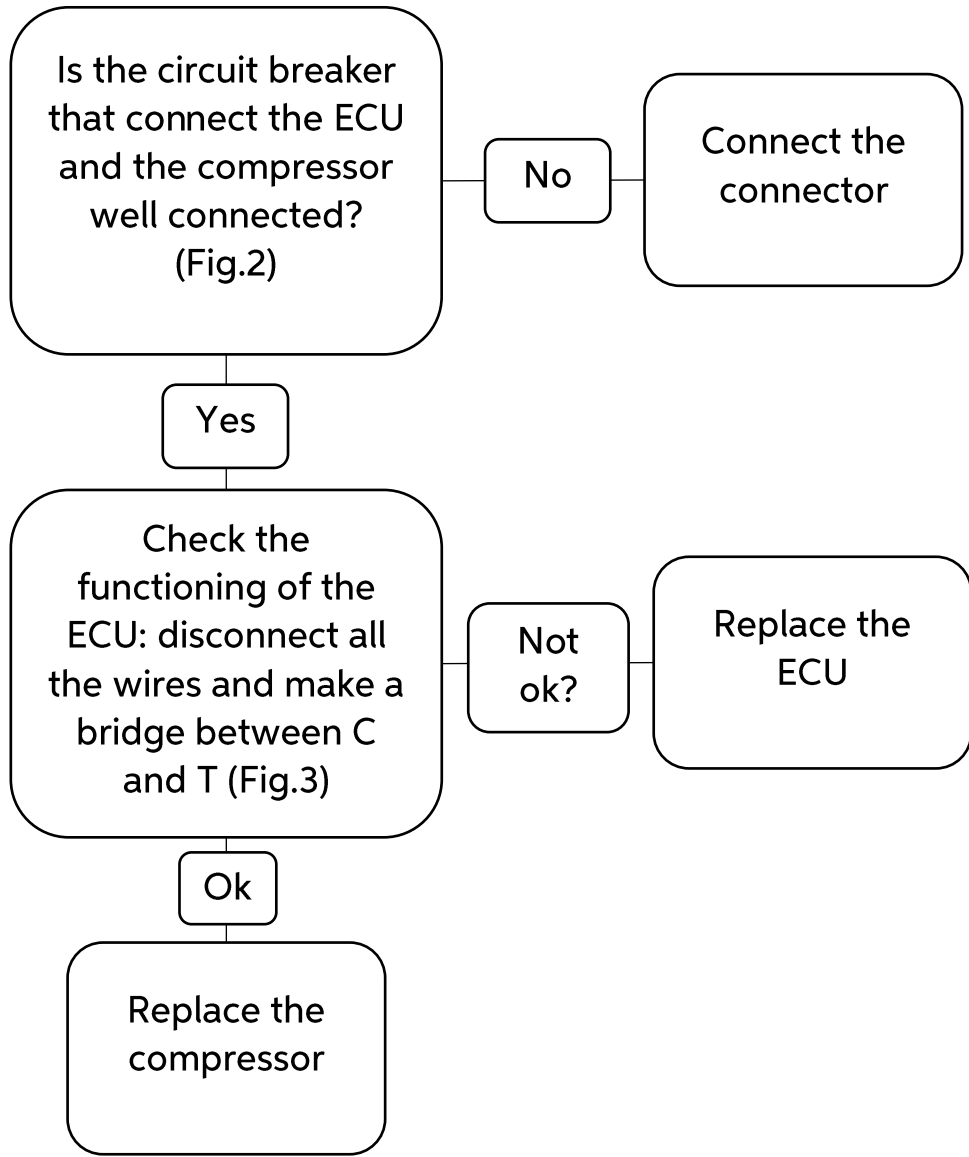


Fig. 2

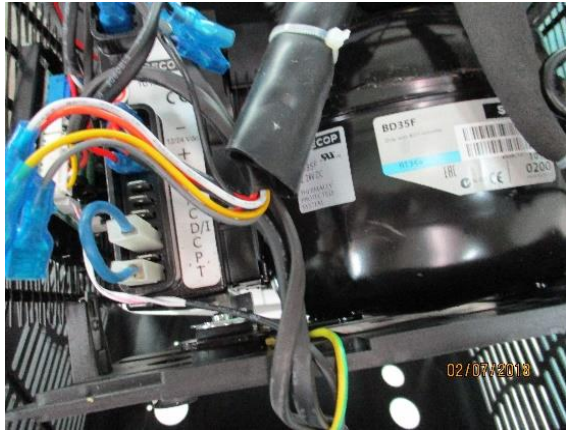
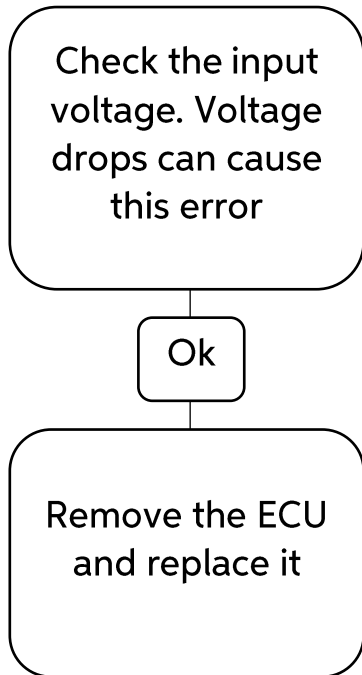
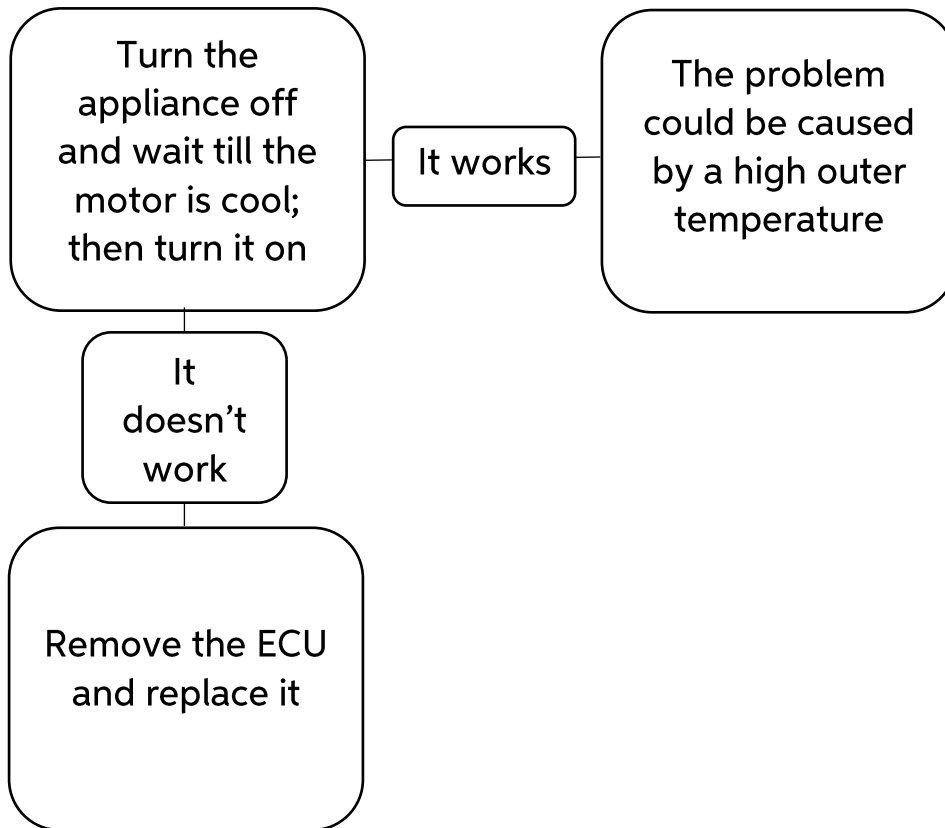


Fig. 3

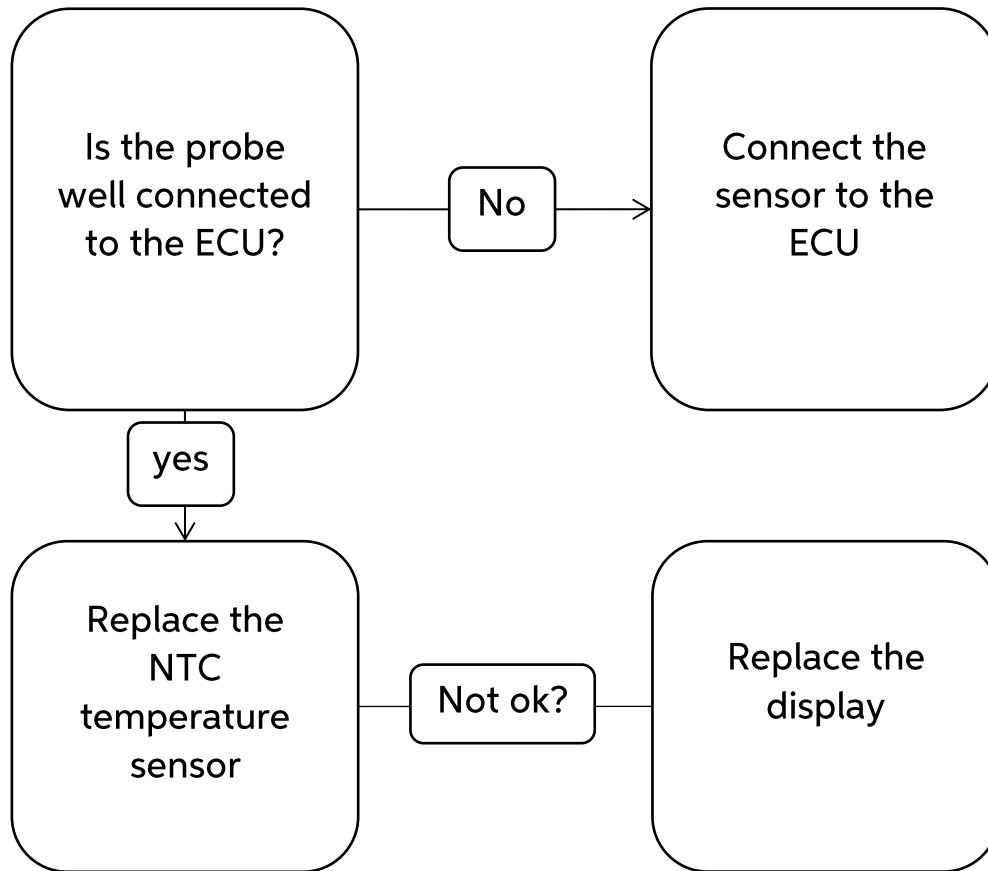
- ERROR E4: Minimum motor speed error



- ERROR E5: Thermal cut-out of electronic unit



- ERROR E6: Faulty temperature sensor



HOW TO REPLACE THE TEMPERATURE PROBE



1. Unscrew the lateral bolts fixing the carter (6 bolts)



2. Unscrew the bolts under the carter (5 screws)



3. Unscrew the bolt fixing the probe, disconnect the connection wire from the ECU and reverse the procedure to install a new probe

HOW TO REPLACE THE FAN



1. Unscrew the lateral bolts fixing the carter (6 bolts)



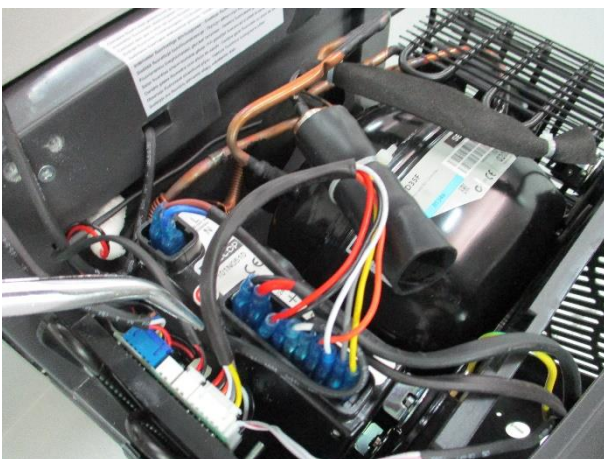
2. Unscrew the bolts under the carter (5 bolts)



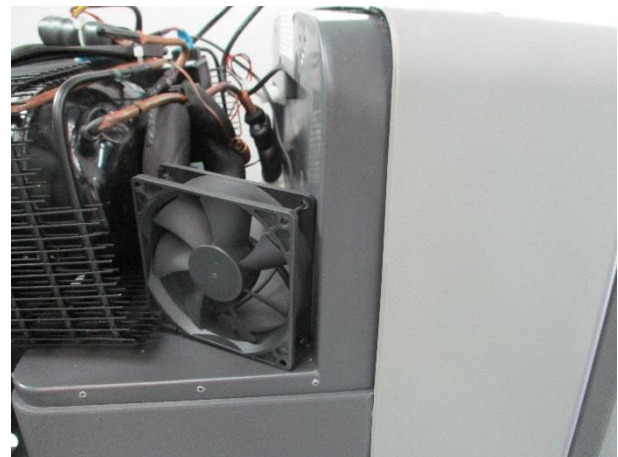
3. Unscrew the two brackets (6 screws)



4. Unscrew the bolts (3 screws) and disconnect the fan's wires from the ECU



5. Disconnect the fan's wire



6. Remove the fan and reverse the procedure to install the new fan

TB_31_41

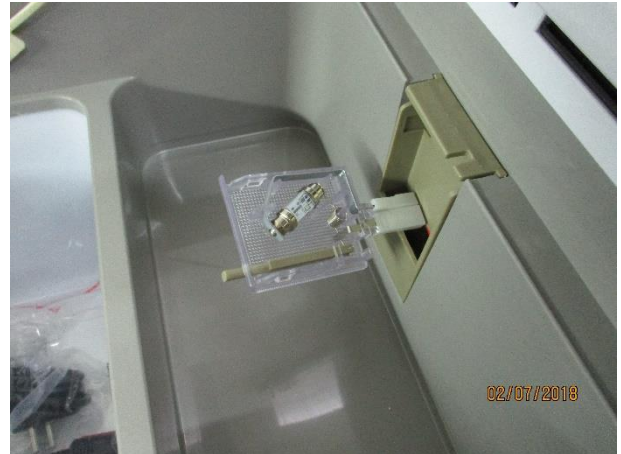
Attention: put the fan with the green label towards the inside of the refrigerator



HOW TO REPLACE THE LIGHT BULB



1. Pull the light bulb applying pressure on the button



2. Remove the light bulb and replace it

HOW TO REPLACE THE ECU



1. Unscrew the lateral bolts fixing the carter (6 bolts)



2. Unscrew the bolts under the carter (5 bolts)



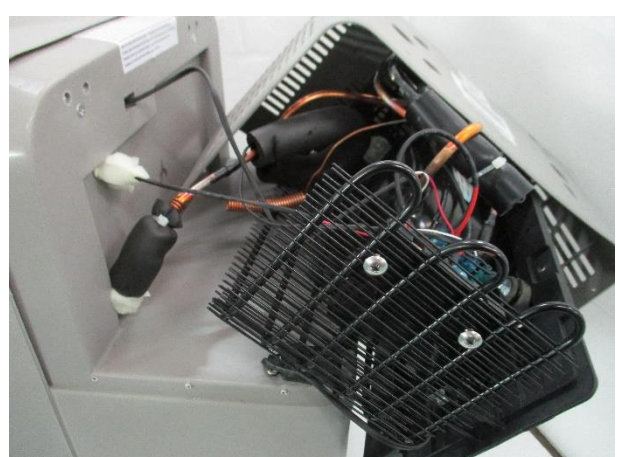
3. Unscrew the two brackets (6 bolts)



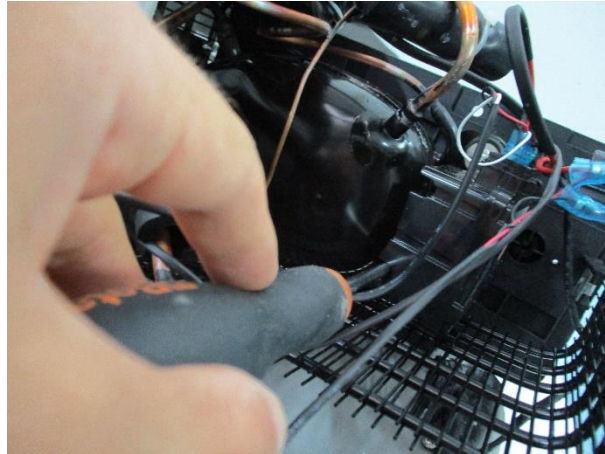
4. Unscrew the bolts that fix the plastic support (6 bolts)



5. Unscrew the bolt



6. Move the refrigerating unit to unscrew the last bolt fixing the ECU



7. Unscrew the last bolt and reverse the procedure replacing the ECU

HOW TO REPLACE THE DISPLAY



1. Use a thin object as a lever to unscrew the display



2. Disconnect the wires and replace the display

HOW TO REPLACE THE LID



1. Unscrew the inner screw



2. Insert a small rod in the lateral hole and open the cover applying pressure with the rod