

T B S E R I E S

indelB

trouble shooting

TB_16DR_30DR_(DC)_TS_22-03-2019

T B S E R I E S

3	ERROR E1
4	ERROR E2
5	ERROR E3
6	ERROR E4
7	ERROR E5
8	ERROR E6
9	HOW TO REPLACE THE TEMPERATURE PROBE
10	HOW TO REPLACE THE FAN
11	HOW TO REPLACE THE ECU
12	HOW TO REPLACE THE DISPLAY
13	HOW TO REPLACE THE DRAWER
14	HOW TO REPLACE THE DOOR
15	HOW TO REPLACE THE DRAWER RAIL
16 - 17	HOW TO CHANGE THE REFRIGERANT UNIT POSITION

indelB

TB_16DR_30DR_(DC)_TS_22-03-2019

- ERROR E1: Battery protection cut-out

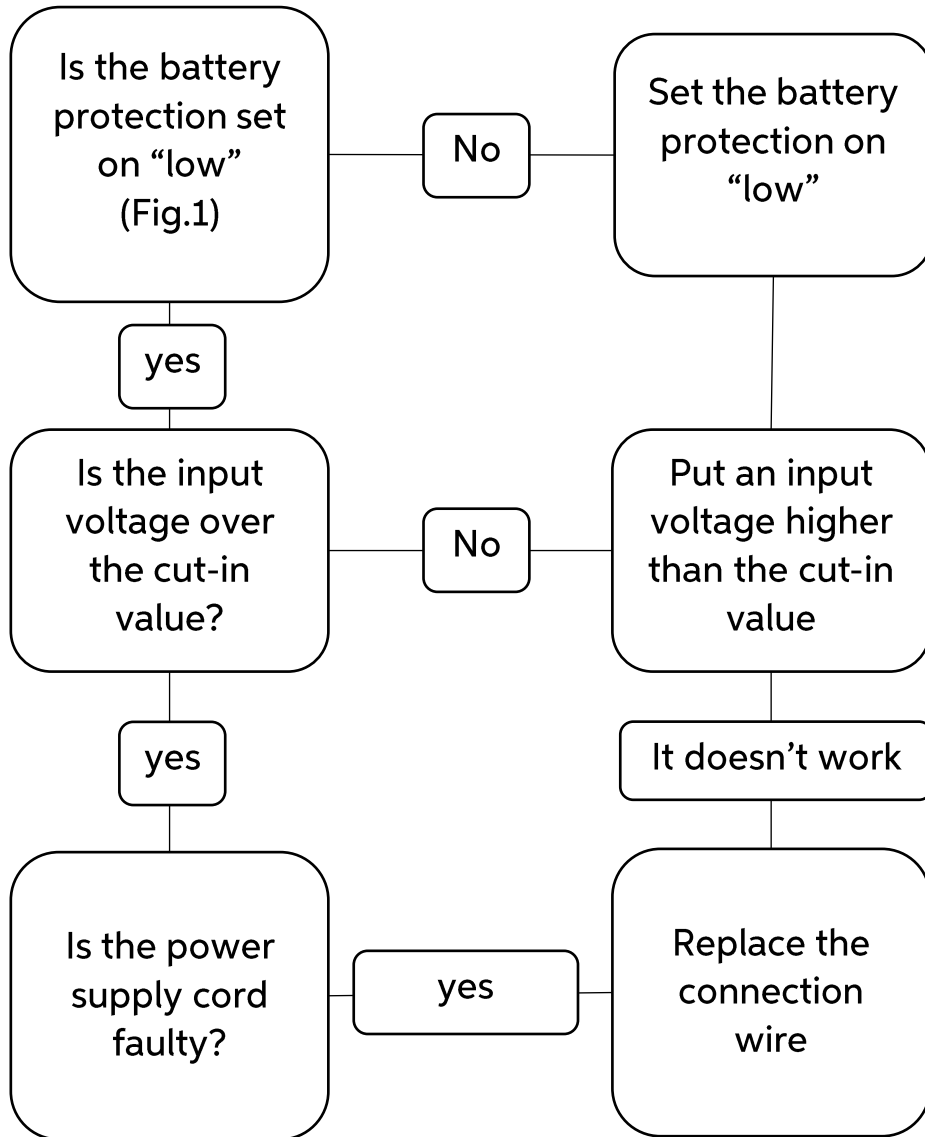


Fig. 1

- **ERROR E2: Fan over-current cut-out**

This error is caused by an over-current that arrived at the fan. In this case you must replace the fan (see “How to replace the fan”).

- ERROR E3: Motor start error

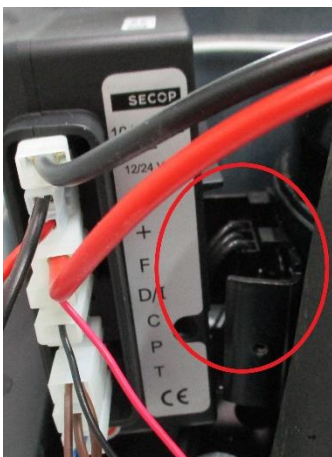
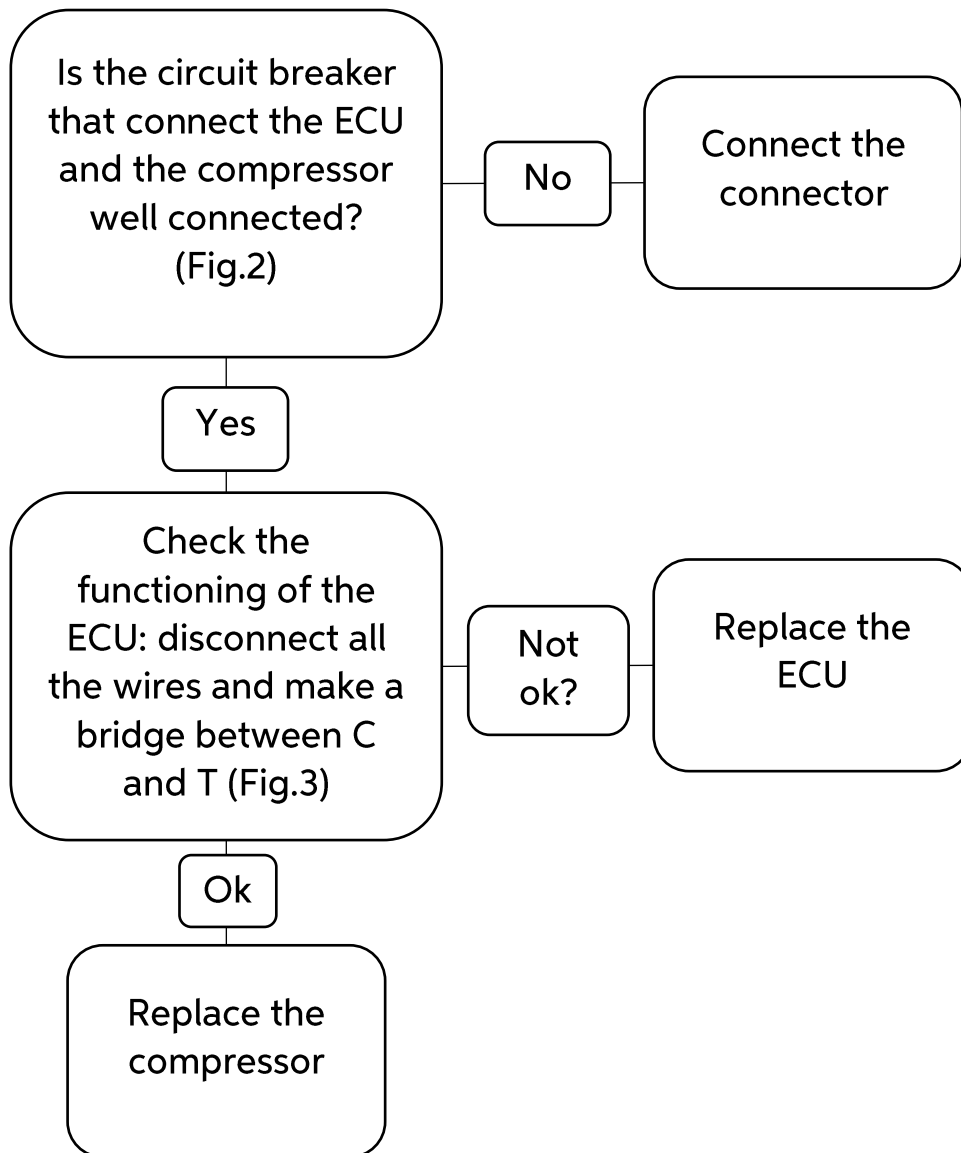
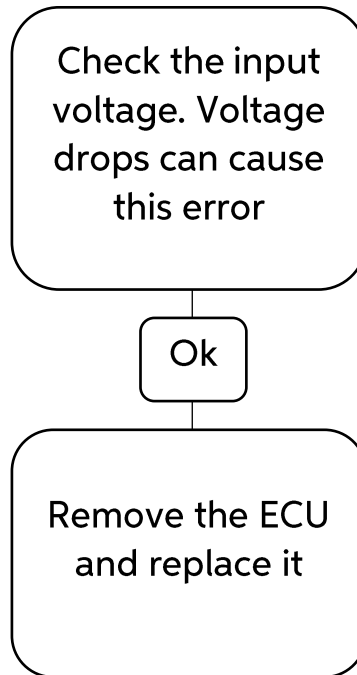


Fig. 2

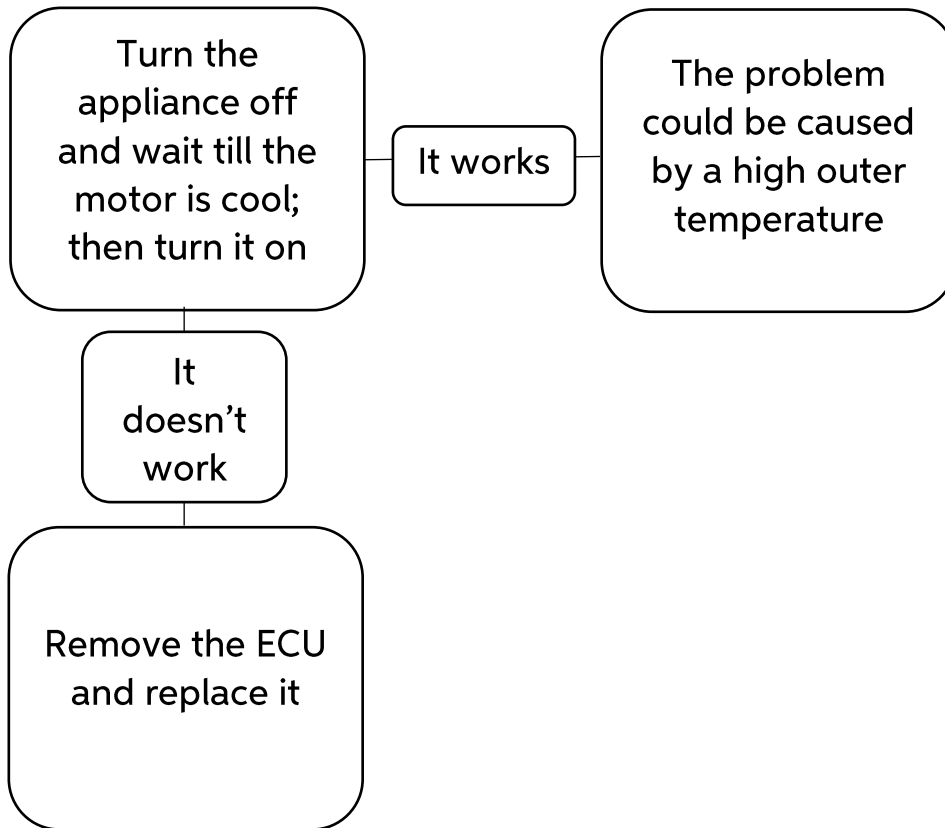


Fig. 3

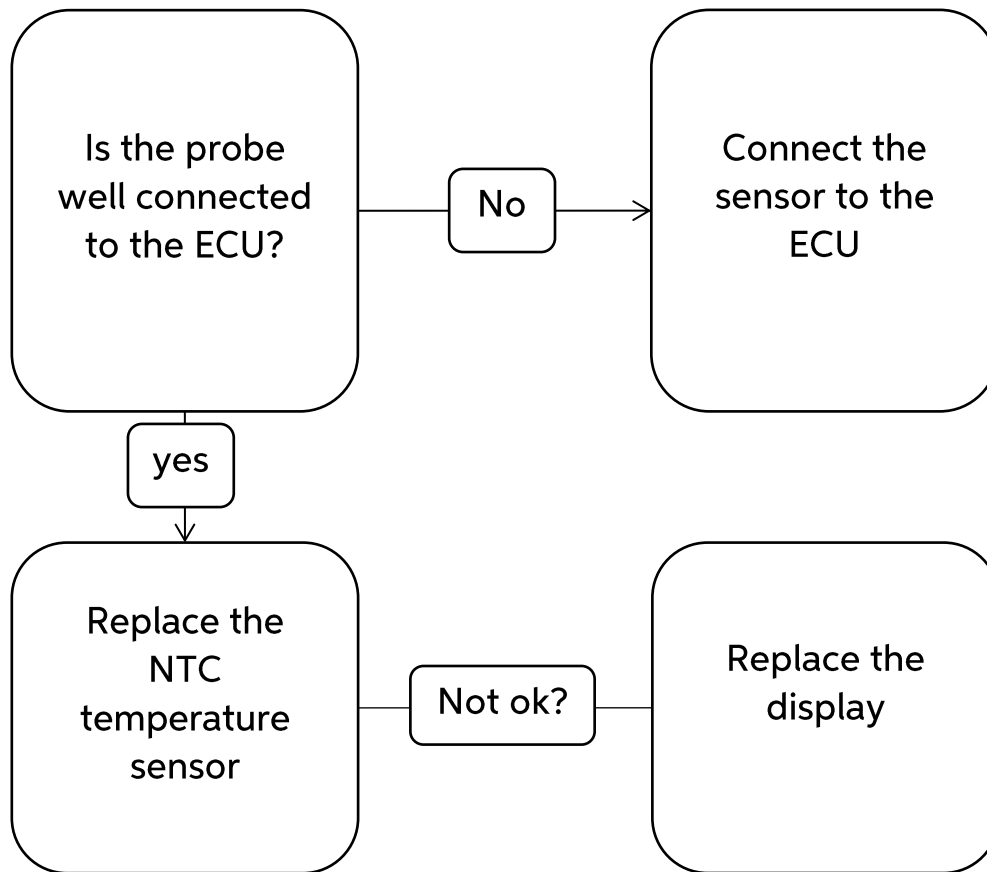
- ERROR E4: Minimum motor speed error



- ERROR E5: Thermal cut-out of electronic unit



- ERROR E6: Faulty temperature probe



HOW TO REPLACE THE TEMPERATURE PROBE



1. Switch the position of the hooks in both sides of the drawer (see the following picture)



2. While you keep the two hooks in switched position, pull the drawer to remove it



3. Push with a finger sideways to unscrew the probe's protection



4. Disconnect the wire and reverse the procedure to replace the probe

HOW TO REPLACE THE FAN



1. Unscrew the carter (8 bolts)

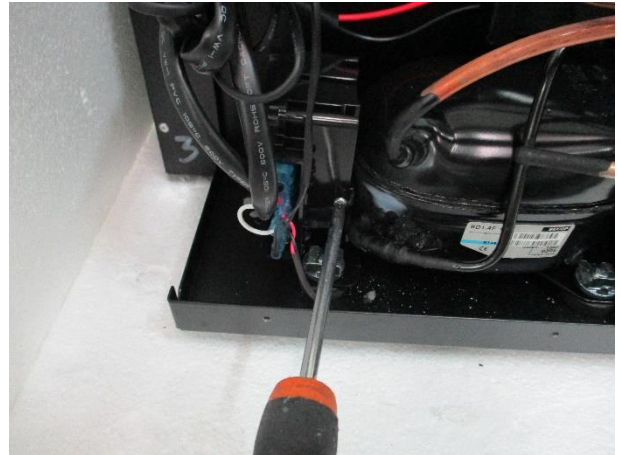


2. Unscrew the 2 bolts fixing the fan and reverse the procedure replacing the fan with a new one

HOW TO REPLACE THE ECU



1. Unscrew the carter (8 bolts)



2. Unscrew the first bolt

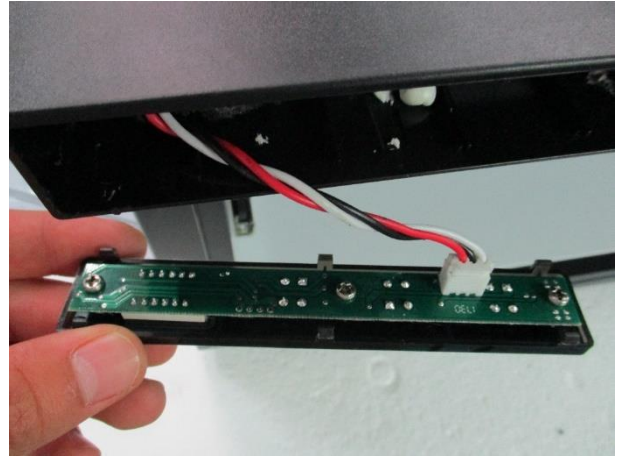


3. Unscrew the last bolt, disconnect all the wires from the ECU and remove it. Reverse the procedure to replace the ECU

HOW TO REPLACE THE DISPLAY



1. Insert a thin object on the bottom of a corner and use it as a leverage



2. Disconnect the wire and replace the display

HOW TO REPLACE THE DRAWER



1. Switch the position of the hooks in both sides of the drawer (see the following picture)



2. While you keep the two hooks in switched position, pull the drawer to remove it

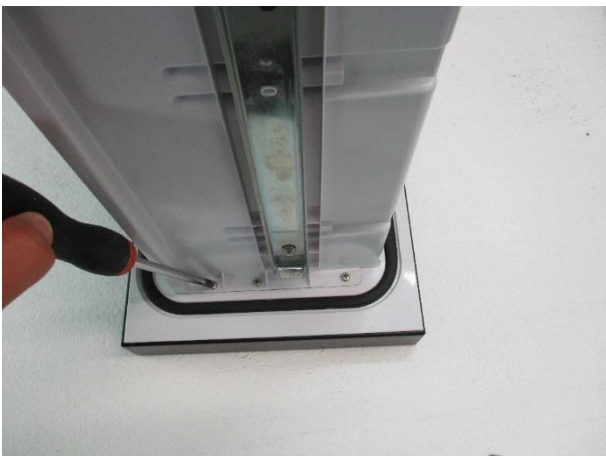
HOW TO REPLACE THE DOOR



1. Switch the position of the hooks in both sides of the drawer (see the following picture)



2. While you keep the two hooks in switched position, pull the drawer to remove it



3. Unscrew the bolts fixing the door (6 bolts)



4. Pull the drawer keeping the door with the other hand

HOW TO REPLACE THE DRAWER RAIL



1. Switch the position of the hooks in both sides of the drawer (see the following picture)



2. While you keep the two hooks in switched position, pull the drawer to remove it



3. Unscrew the bolt in figure



4. Unscrew the 2 highlighted bolts to remove the rail and reverse the procedure to replace it

HOW TO CHANGE THE REFRIGERANT UNIT POSITION



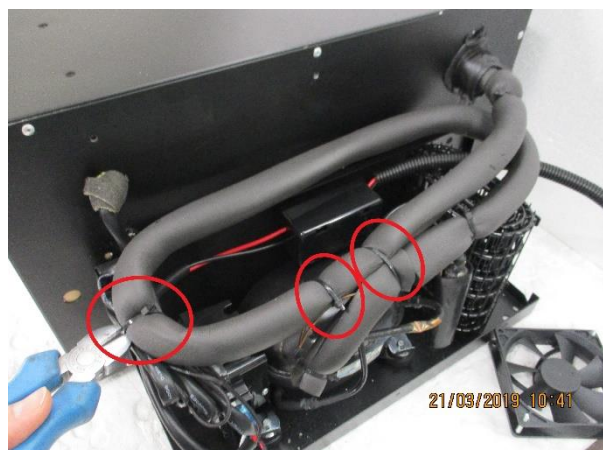
1. Unscrew the carter (8 bolts)



2. Unscrew the 2 bolts fixing the fan and reverse the procedure replacing the fan with a new one

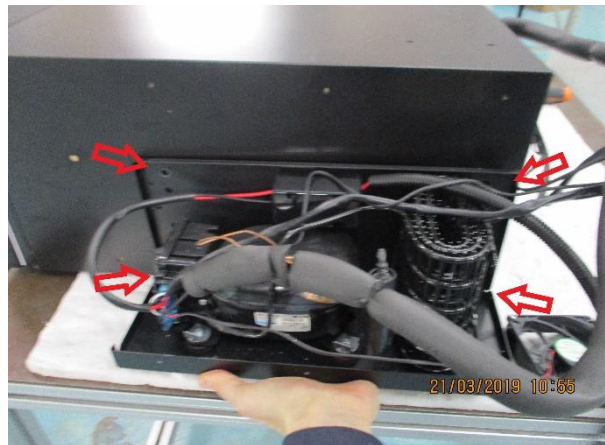


3. Unscrew the basement of the refrigerating unit (4 screws)



4. Cut the 3 cable-ties fixing wires and pipe

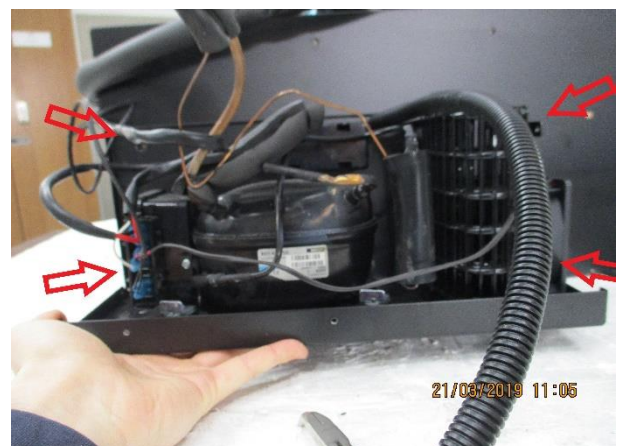
Move the refrigerating unit to one of the three possible positions:



- 1) RIGHT-SIDE: Screw the 4 screws and then reinstall the fan



- 2) UPPER-SIDE: Screw the 4 screws and then reinstall the fan



- 3) LEFT-SIDE: Pierce the label in correspondence of the screw hole, then fix the refrigerating unit with the 4 screws. Reinstall the fan.