

S W B A C K

indelB

trouble shooting

SWBACK_(DC)_TS_12-13-2018

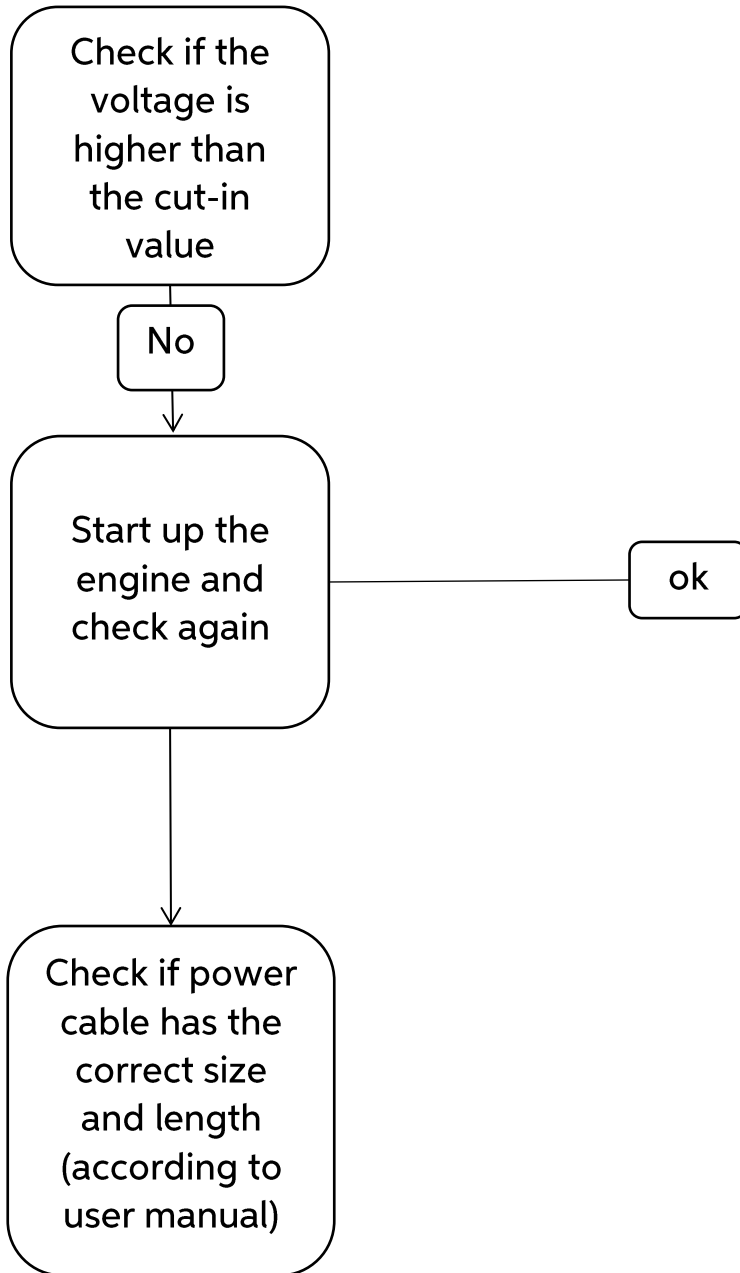
SW BACK

3	ERROR E1
4	ERROR E2
5	ERROR E3
6	ERROR E4
7	ERROR E5
8	ERROR E6
9	ERROR E7
10	ERROR E8
11	HOW TO REPLACE THE TEMPERATURE PROBE
12	HOW TO REPLACE THE CONDENSER FAN
13	HOW TO REPLACE THE EVAPORATOR BLOWER
14	HOW TO REPLACE THE ECU
15	HOW TO REPLACE THE TILT SENSOR
16	NON-REPORTED ERROR

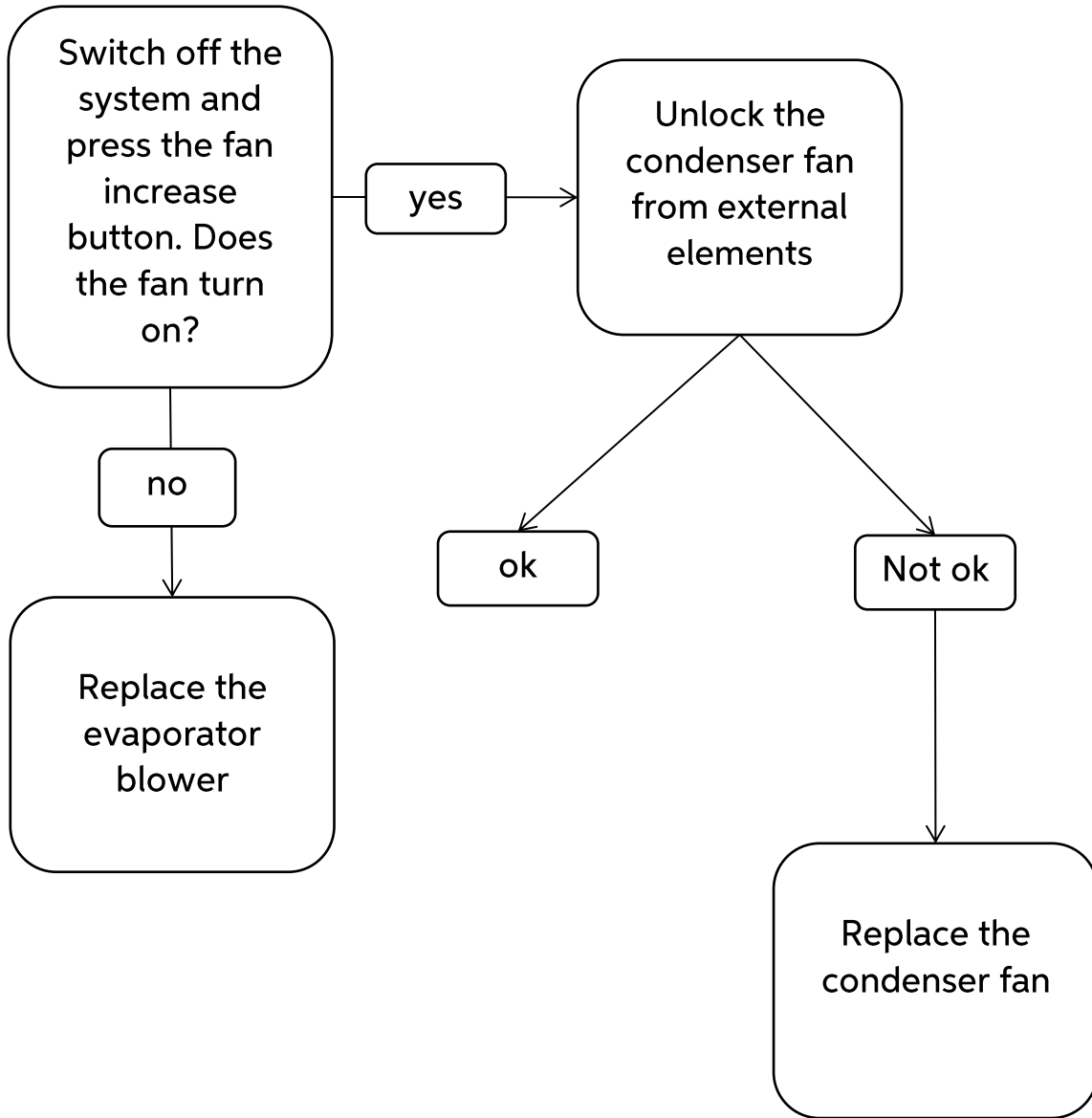
indelB

SWBACK_(DC)_TS_12-13-2018

- ERROR E1: Battery voltage



- ERROR E2: Fan over-current cut-out



- **ERROR E3: Compressor locked**

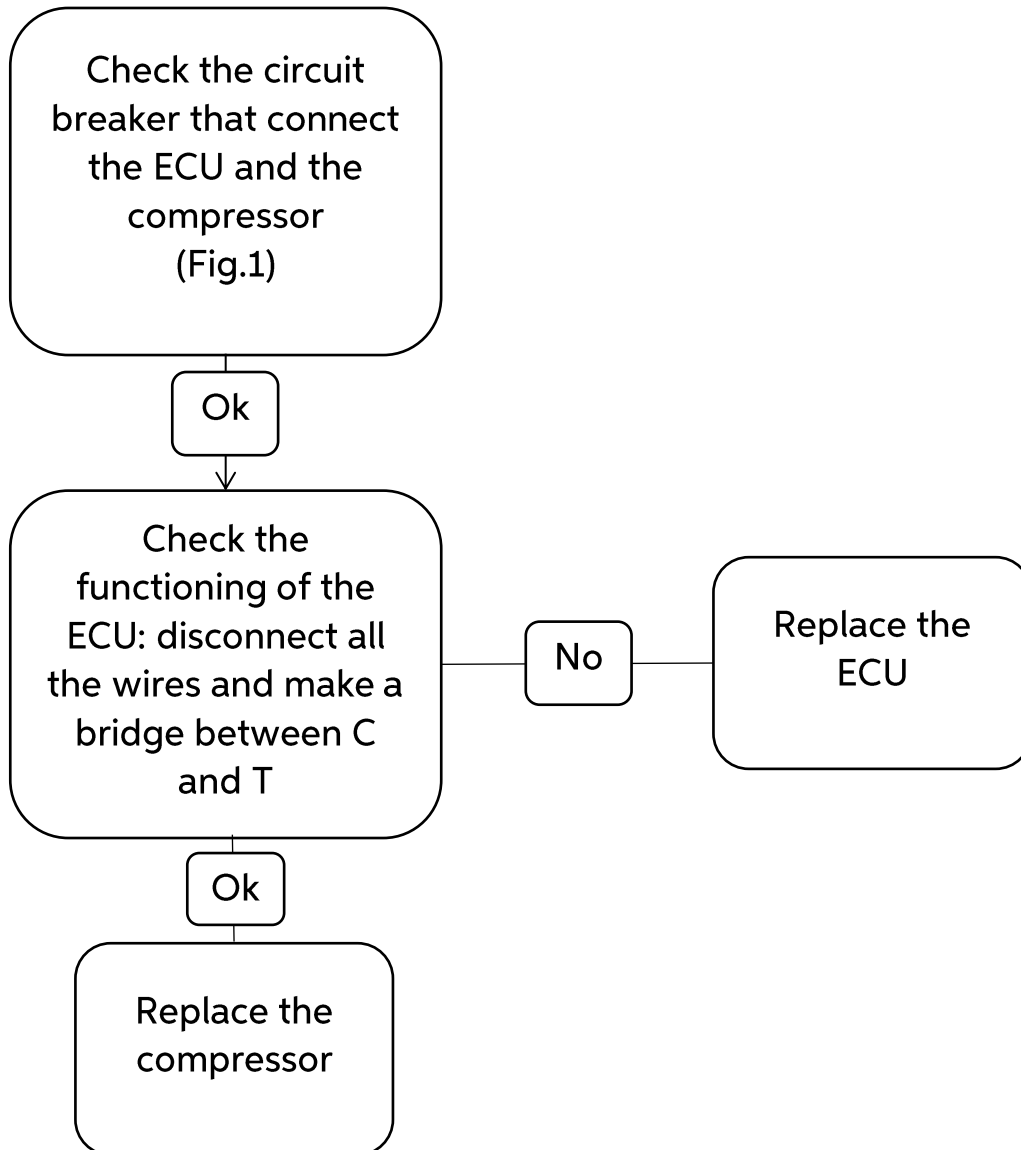
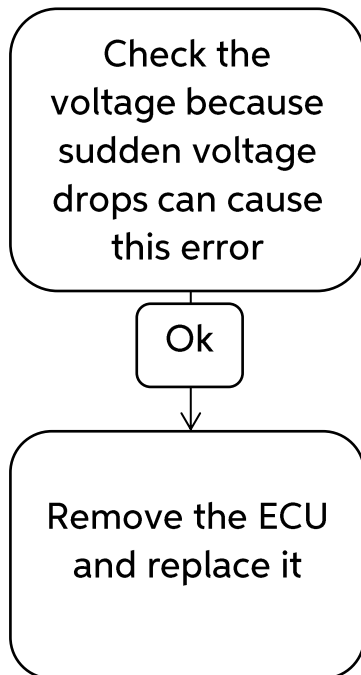
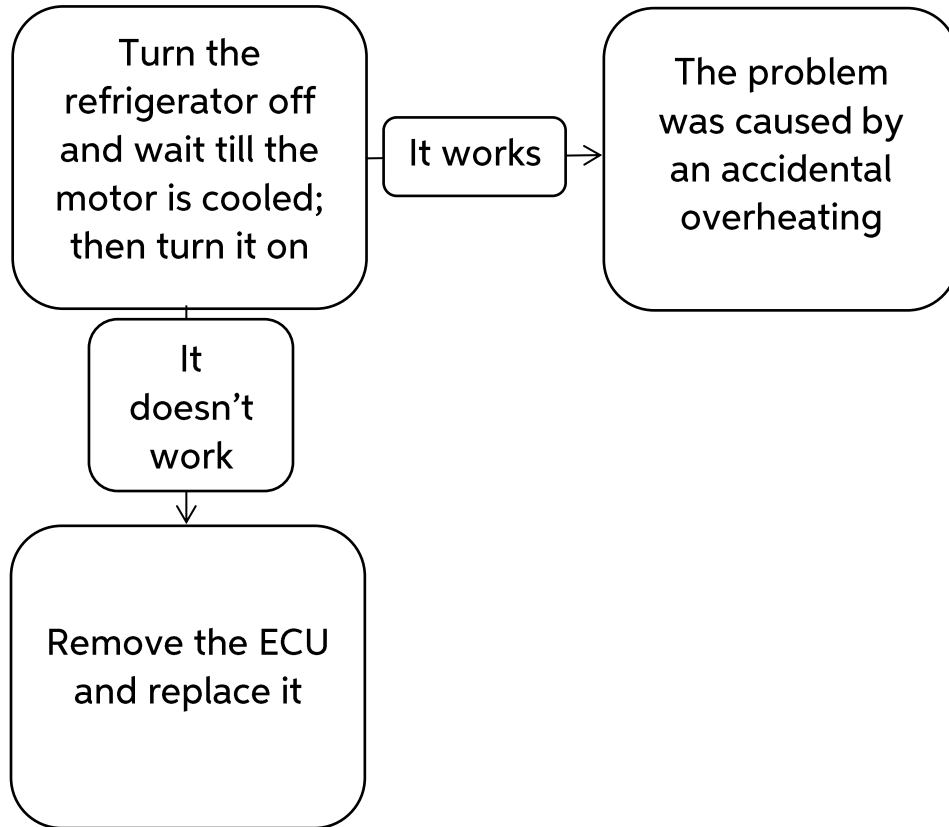


Fig. 1

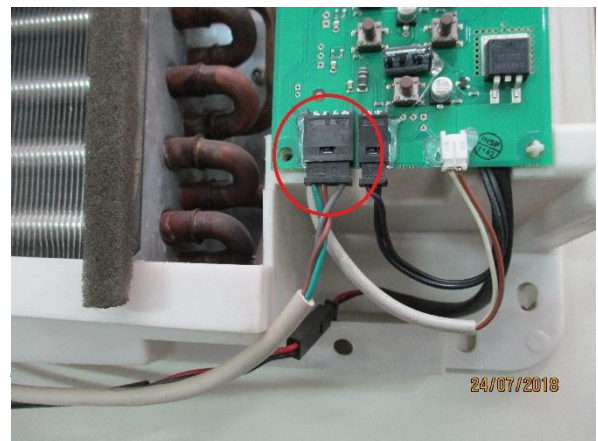
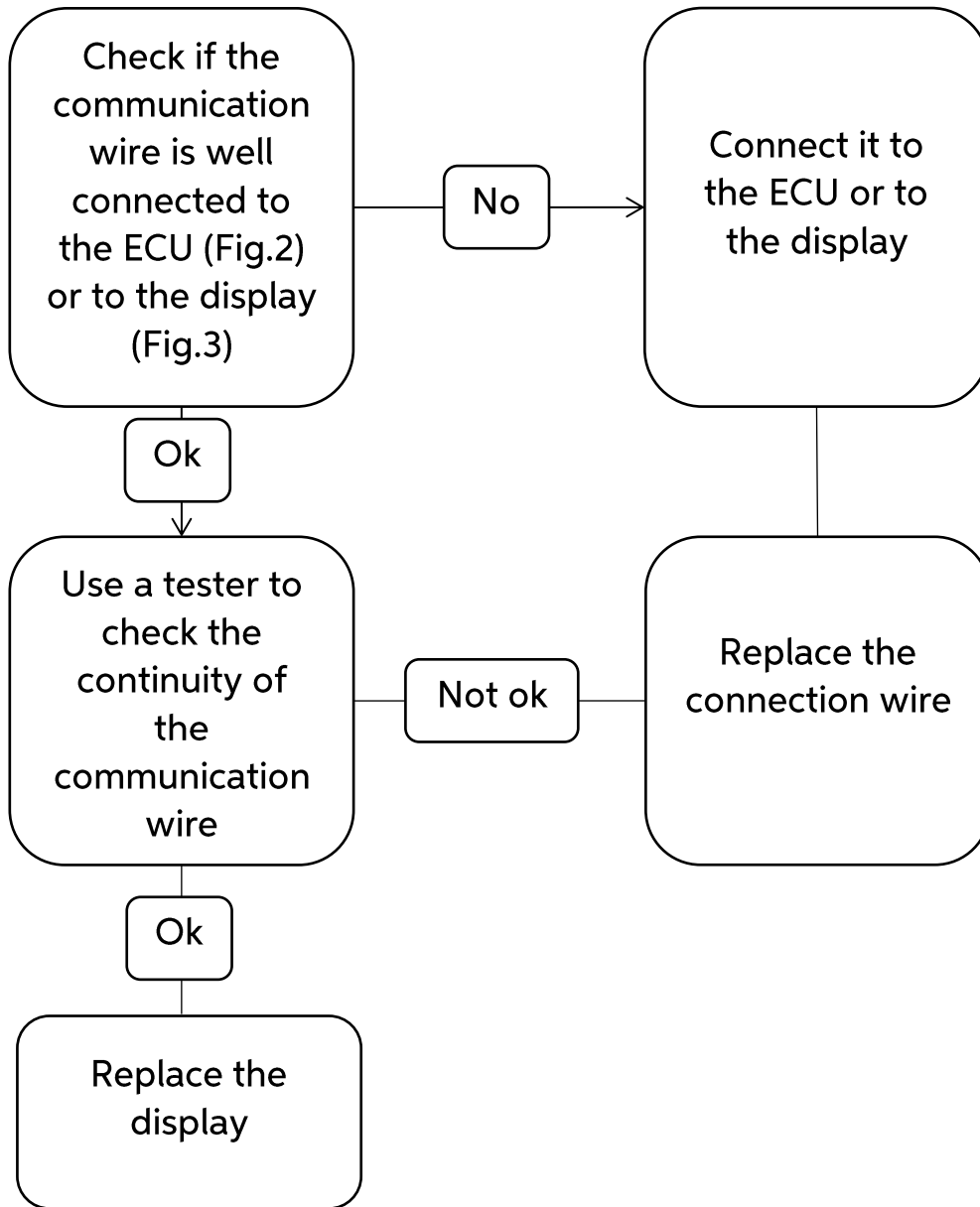
- **ERROR E4: Minimum compressor rotation speed**



- **ERROR E5: Thermal cut-out of electronic unit**



- ERROR E6: Communication error



- ERROR E7: Faulty temperature probe

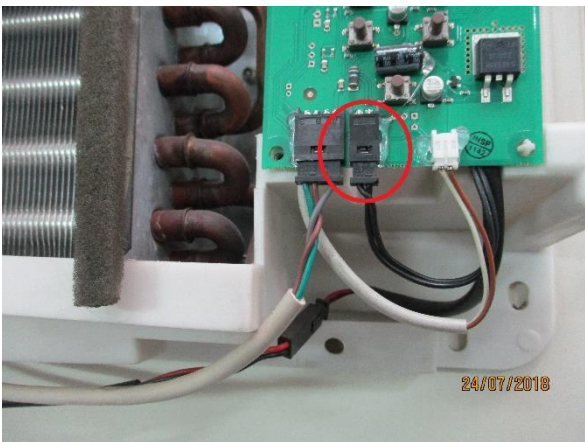
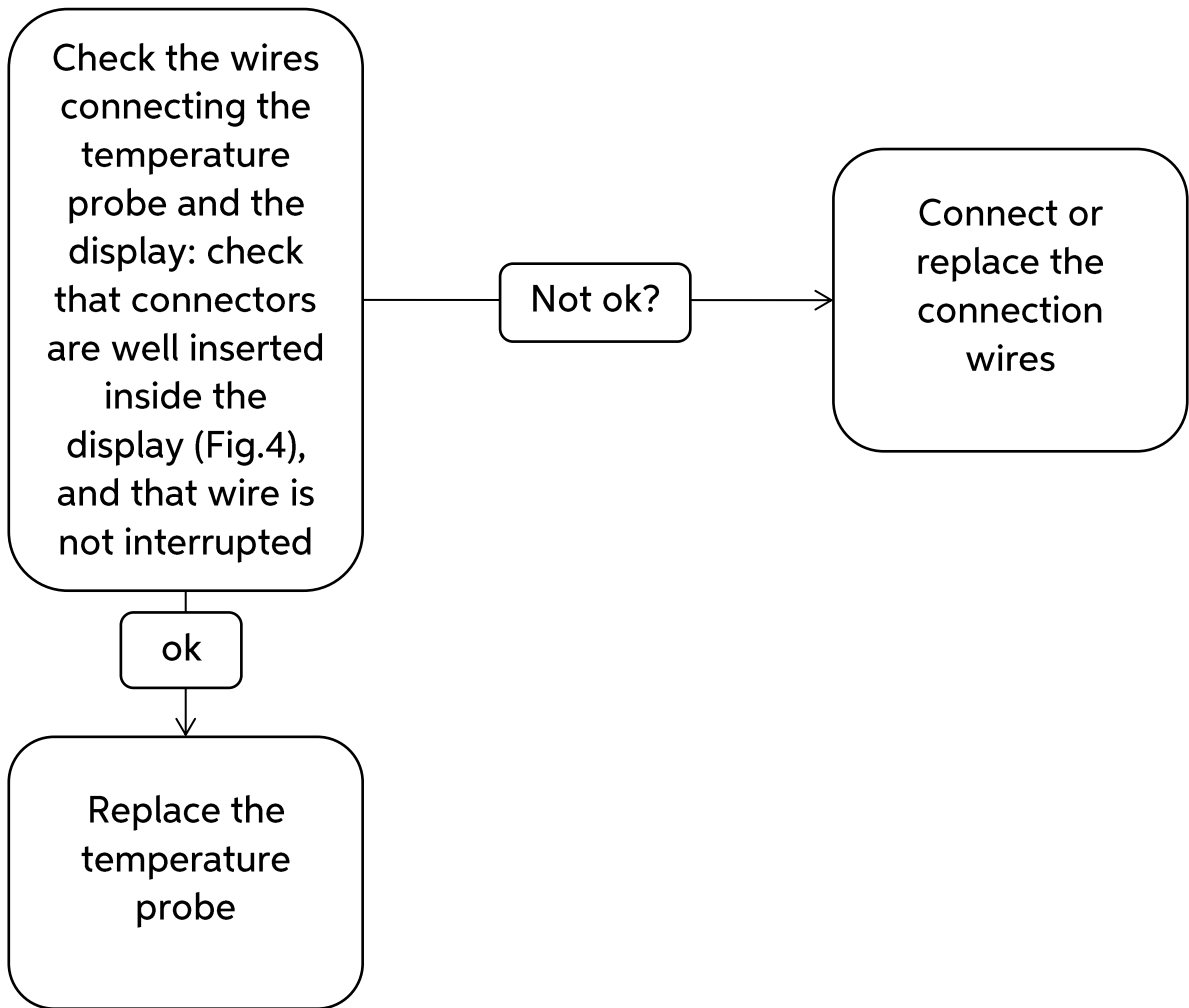


Fig. 4

● **ERROR E8: Tilt**

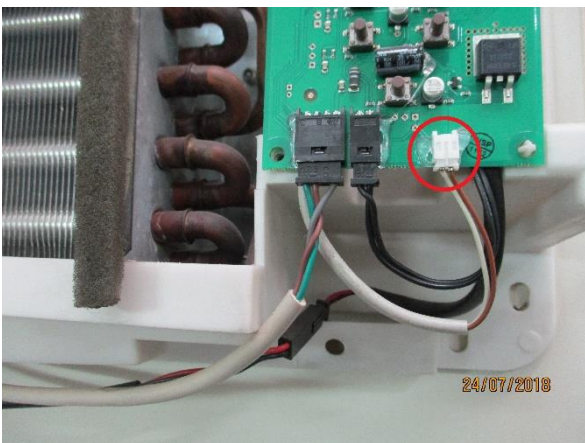
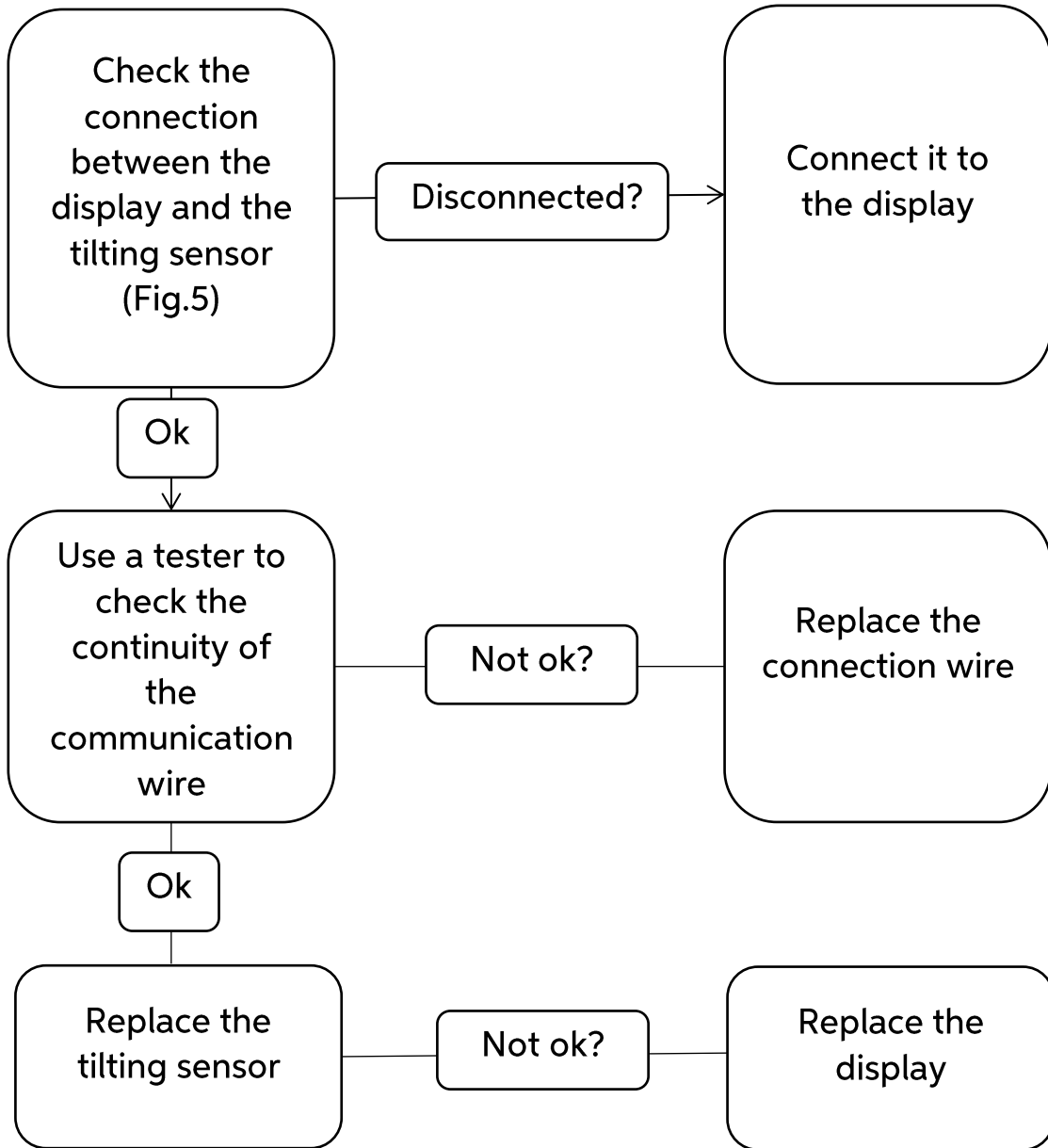
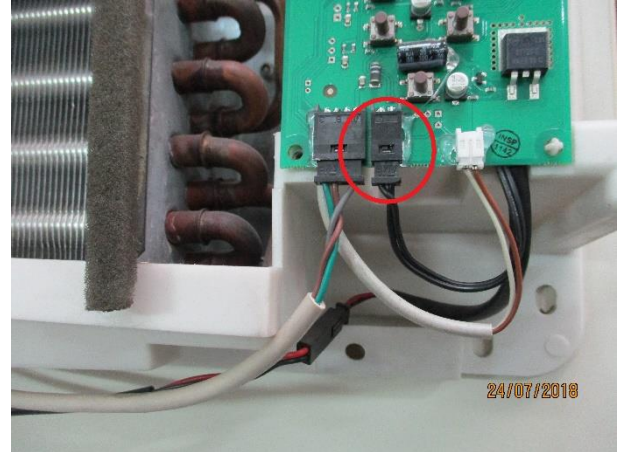


Fig. 5

HOW TO REPLACE THE TEMPERATURE PROBE



1. Unscrew the air diffuser (4 bolts)



2. Disconnect the probe's wire from the display)



3. Remove the probe and reverse the procedure to replace it

HOW TO REPLACE THE CONDENSER FAN



1. Unscrew the condenser fan (4 bolts)



2. Disconnect the fan's wire and replace the fan

HOW TO REPLACE THE EVAPORATOR BLOWER



1. Unscrew the air diffuser (4 bolts)



2. Unscrew the 4 fasteners



3. Remove the evaporator blower and reverse the procedure to replace it

HOW TO REPLACE THE ECU

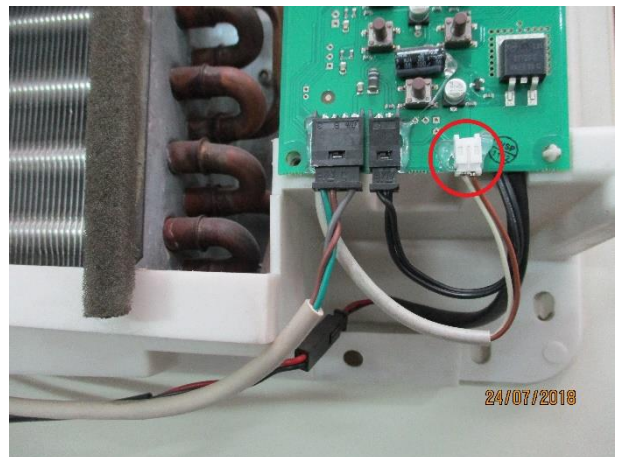


Remove the carter and unscrew the 2 bolts fixing the ECU. Disconnect the wires from it and replace it

HOW TO REPLACE THE TILT SENSOR



1. Unscrew the air diffuser (4 bolts)



2. Disconnect the sensor's wire from the display



3. Remove the tilt sensor and reverse the procedure to install a new one

NON-REPORTED ERROR

There are two kind of error that aren't reported on the display:

1. THE SYSTEM CANNOT BE TURNED OFF USING THE ON/OFF BUTTON:

The communication wire is completely disconnected.
Connect the communication wire and press the ON/OFF button to turn off the system.

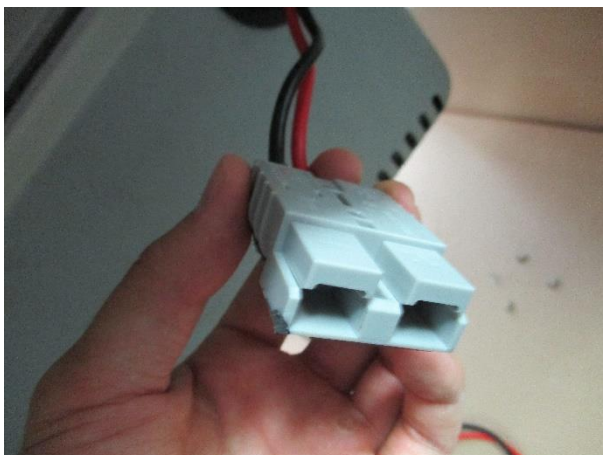


Connection wire

2. THE DISPLAY IS FUNCTIONING BUT THE COMPRESSOR AND THE FAN AREN'T

The voltage is too low, but his value is over the value that causes error E1.

Disconnect the feeding harness, turn on the vehicle and then connect again the feeding harness.



Plug of the feeding harness