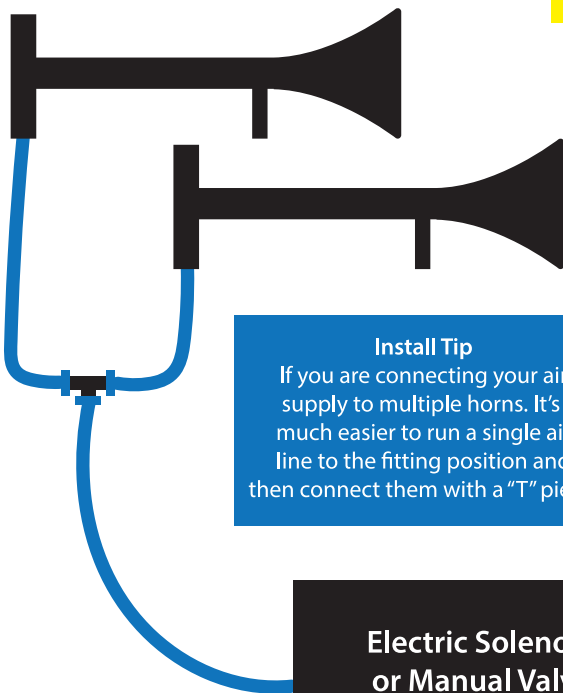


This instruction is a guide only, to be used as an overview of installing air horns of most types to your vehicle. It is not vehicle specific and not all parts required may be available from Kuda UK or supplied in the purchased kit

ALWAYS ENSURE VEHICLE IS PARKED, WITH THE HANDBRAKE ON AND ENGINE OFF BEFORE WORKING.

Air Supply



Install Tip
If you are connecting your air supply to multiple horns. It's much easier to run a single air line to the fitting position and then connect them with a "T" piece

Electric Solenoid or Manual Valve

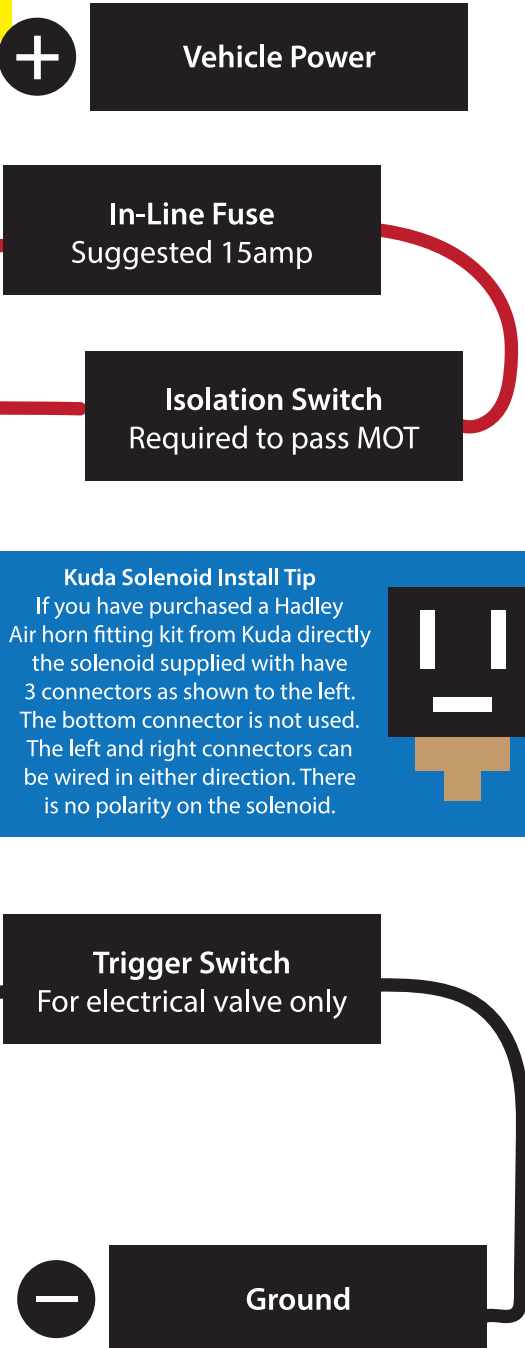
Install Tip
Using a manual, pull chain valve eliminates the need for any electrical wiring or switches.

Vehicle air supply or compressor


Install Tip
For vehicles with air suspension seats, this is often the easiest place to pick up the air supply.

WARNING
Remember to check the minimum and maximum air supply pressure on the horns you are fitting.

Wiring Diagram



Kuda Solenoid Install Tip
If you have purchased a Hadley Air horn fitting kit from Kuda directly the solenoid supplied with have 3 connectors as shown to the left. The bottom connector is not used. The left and right connectors can be wired in either direction. There is no polarity on the solenoid.



Trigger Switch
For electrical valve only

Ground