



# TO SUIT DAF XB/XD/XF/XG/XG+

Aerodynamics and Accessories

# DAF XB/XD/XF/XG/XG+

Aerodynamics and Accessories



## Microwave To Suit DAF XD

Option Code - TRUCKCHEFDAFXD

Introducing TruckChef. Our exclusive 24v microwave, 20L, 800W with 3 year return to base warranty.



Fitting Time  
**2 Hours**



## Microwave To Suit DAF XF and XG (New Generation MY2021 Onwards)

Option Code - TRUCKCHEFDAFXG

Introducing TruckChef. Our exclusive 24v microwave, 20L, 800W with 3 year return to base warranty.



Fitting Time  
**2 Hours**



## Microwave To Suit DAF XG+ (New Generation MY2021 Onwards)

Option Code - TRUCKCHEFDAFXG2

Introducing TruckChef. Our exclusive 24v microwave, 20L, 800W with 3 year return to base warranty.



Fitting Time  
**1 Hour**



## CabStore Locker System to suit DAF XD

Option Code - 115DAFXD

Rear locker system to fit the DAF XD with our newly engineered shutter door system. 15kg Capacity per locker.



Fitting Time  
**1 Hour**



## CabStore Locker System to suit DAF New Generation XF Cabs (MY2021 Onwards)

Option Code - 115DAFXF

Rear locker system to fit the New DAF XF with our newly engineered shutter door system. 15kg Capacity per locker.



Fitting Time  
**1 Hour**

# DAF XB/XD/XF/XG/XG+

Aerodynamics and Accessories



## CabStore Locker System to suit DAF New Generation XG Cabs (MY2021 Onwards)

Option Code - 115DAFXG

Rear locker system to fit the DAF XG with our newly engineered shutter door system. 15kg Capacity per locker.



Fitting Time  
**1 Hour**



## CabStore Locker System to suit DAF XG+ (MY2021 Onwards)

Option Code - 115DAFXGPLUS

Rear locker system to fit the DAF XG+ with our newly engineered shutter door system. 15kg Capacity per locker.



Fitting Time  
**1 Hour**



## LUXMOV In Cab LED Television Kit. TV/Aerial/Bracket

Option Code - LUXMOVKIT

InCab TV Kit. The perfect companion for any Truck. This kit includes a 21.5" LUXMOV Smart LED TV, Aerial and mounting bracket. Pictures show examples of how some customers have fitted TV's in their trucks for an idea of how it all looks.



Fitting Time  
**3 Hours**



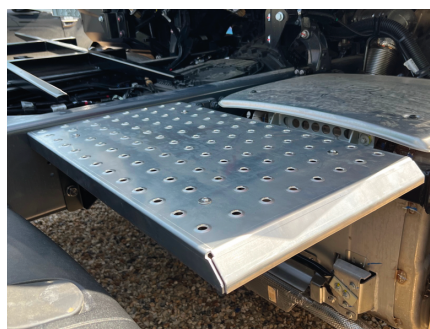
## DAF XD/XF/XG/XG+, 6x2 Kuda Safety Platform/Catwalk System

Option Code - SAFECATDAFXG

Our brand new safety chassis catwalk system has been designed from the ground up to ensure the up-most of safety whilst working behind the cab.



Fitting Time  
**1 Hour**



## New DAF XF XG (6x2) Main Chassis Catwalk In-Fill Panel

Option Code - CATDAFXG

This catwalk system works alongside the manufacturers original catwalk sections giving you more workspace on the chassis.



Fitting Time  
**30 Mins**

# DAF XB/XD/XF/XG/XG+

Aerodynamics and Accessories



## DAF XF/XG/XG+ FTG 6x2 Mid Lift 4.15m WB/0.99M Overhang Sideskirts (Pair)

Option Code - 105DAFFTMID

GRP Side Skirts to suit the DAF XF/XG/XG+ FTG 6x2 Mid Lift 4.15m WB / 0.99m Overhang. Supplied in DAF White.

Fitting Time  
**2 Hours**



## DAF XF/XG/XG+ 6x2, (FTG) 3.95m WB, 02150 Suspension and 490L N/S Fuel Tank, Mid-Lift Sideskirts (Pair)

Option Code - 105DAFXG2

GRP Side Skirts to suit the DAF XF/XG/XG+ 6x2, (FTG), 3.95m WB, 02150 Suspension and 490L N/s Fuel Tank, Mid-Lift Sideskirts (Pair). Supplied in DAF White.

Fitting Time  
**2 Hours**



## DAF XF/XG/XG+ 6x2, FTG, 3.95m WB, 01249 Suspension and 400L N/s Fuel Tank, Mid-Lift Sideskirts (Pair)

Option Code - 105DAFXG

GRP Side Skirts to suit the DAF XF/XG/XG+ 6x2, (FTG), 3.95m WB, 02149 Suspension and 400L N/s Fuel Tank, Mid-Lift Sideskirts (Pair). Supplied in DAF White.

Fitting Time  
**2 Hours**



## DAF XF/XG/XG+ 6x2, FTP, Mini-Mid lift Sideskirts (Pair)

Option Code - 105DAFXGB

GRP Side Skirts to suit DAF XF/XG/XG+ 6x2, FTP, Mini-Mid Lift (Bogey Axle) with 1000L Dual Tank Set up. Supplied in DAF White.

Fitting Time  
**2 Hours**

# Coming Soon..



iAM Air Management System To Suit DAF XB/XD/XF/XG/XG+



## iAM DAF XB Top Spoiler

Option Code - 103DAFXB-TOP

iAM is our market leading, super sleek and aerodynamic range of air management kits for a large range of trucks.



Fitting Time  
**1 Hour**



## iAM DAF XB - Full Air Management Kit

Option Code - 103DAFXB

iAM is our market leading, super sleek and aerodynamic range of air management kits for a large range of trucks.



Fitting Time  
**3 Hours**



## iAM DAF XF - Full Air Management Kit

Option Code - 103DAFXFNGT

iAM is our market leading, super sleek and aerodynamic range of air management kits for a large range of trucks.



Fitting Time  
**3 Hours**



## iAM DAF XF - To Suit Factory Uprights

Option Code - 103DAFXFNGT-F

iAM is our market leading, super sleek and aerodynamic range of air management kits for a large range of trucks.



Fitting Time  
**3 Hours**

# DAF XB/XD/XF/XG/XG+

Aerodynamics and Accessories



## iAM DAF XG – Full Air Management Kit

Option Code – 103DAFXG

iAM is our market leading, super sleek and aerodynamic range of air management kits for a large range of trucks.



Fitting Time  
**3 Hours**



## iAM DAF XG – To Suit Factory Uprights

Option Code – 103DAFXG-F

iAM is our market leading, super sleek and aerodynamic range of air management kits for a large range of trucks.



Fitting Time  
**3 Hours**



## iAM DAF XG+ – Full Air Management Kit

Option Code – 103DAFXG1

iAM is our market leading, super sleek and aerodynamic range of air management kits for a large range of trucks.



Fitting Time  
**3 Hours**



## iAM DAF XG+ – To Suit Factory Uprights

Option Code – 103DAFXG1-F

iAM is our market leading, super sleek and aerodynamic range of air management kits for a large range of trucks.



Fitting Time  
**3 Hours**

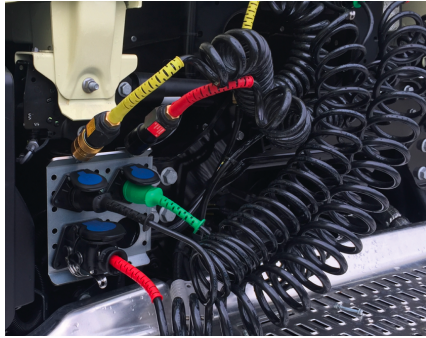


## NEW 9kg Fire Box and Bracket Kit to suit DAF XF, XG, XG+ – No Drilling

Option Code - FIREBOXDAFXG600JBW

This 9kg front opening fire box and bracket kit are specifically designed to fit the DAF XF,XG and XG+ Cabs. This kit means you DO NOT have to drill the cab.

Fitting Time  
**20 Mins**

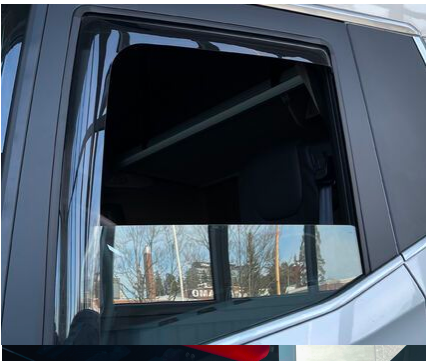


## Suzie Stowage Box, Ground Access to suit DAF XF/XG (MY2021 Onwards) Tractor Unit

Option Code - STOWK-NEWGENXF-NS

This 9kg front opening fire box and bracket kit are specifically designed to fit the DAF XF,XG and XG+ Cabs. This kit means you DO NOT have to drill the cab.

Fitting Time  
**10 Mins**



## DAF XF/XG/XG+ Side Window Deflectors

**VEPRO**

Option Code - 40208543

Side window deflector set suitable for DAF. Ventilates smoke while keeping out rain. Easy to fit design, made from high quality 3mm cast acrylic.

Fitting Time  
**10 Mins**



## DAF XD/XF/XG/XG+ Side Window Deflectors

**VEPRO**

Option Code - 40208615

Side window deflector set suitable for DAF. Ventilates smoke while keeping out rain. Easy to fit design, made from high quality 3mm cast acrylic.

Fitting Time  
**10 Mins**



## DAF XD/XF/XG/XG+ Side Window Deflectors (Short Version)

**VEPRO**

Option Code - 40208617

Side window deflector set suitable for DAF. Ventilates smoke while keeping out rain. Easy to fit design, made from high quality 3mm cast acrylic.

Fitting Time  
**10 Mins**



## Dirt Deflectors Suitable for DAF XF/XG/XG+ 2022 (Pair)

Option Code - AD4413S

Prevents your vehicles side window, side door and mirror from getting dusty/dirty. Custom made modern design, easy to mount. Can be easily painted in vehicle colour. Made from double skin UV-proof and ABS-PMMA.

**VEPRO**

Fitting Time  
**1 Hour**

## SlimLED Nameboard to suit DAF XG+ 2021 (22cm x 164cm)

Option Code - DAF22164

front sign LED is a thin, elegant and extremely effective lighted sign, designed with maximum output. With its 8mm thin sheet, Front sign LED is among the thinnest in the trucking market.

**SRI**  
Sign Solution

Fitting Time  
**1 Hour**

## SlimLED Nameboard to suit DAF XG 2021 (21cm x 164cm)

Option Code - DAF21137

front sign LED is a thin, elegant and extremely effective lighted sign, designed with maximum output. With its 8mm thin sheet, Front sign LED is among the thinnest in the trucking market.

**SRI**  
Sign Solution

Fitting Time  
**1 Hour**

## DAF XG+ 80mm Deeper Smoked Sunvisor Kit

Option Code - 20305167

Reduces the sun glare. Enhances the look. The visor is made from high quality cast acrylic and the brackets are made from black steel which are first zinc-coated and then powder painted.

**VEPRO**

Fitting Time  
**1 Hour**

## DAF XF/XG 80mm Deeper Smoked Sunvisor Kit

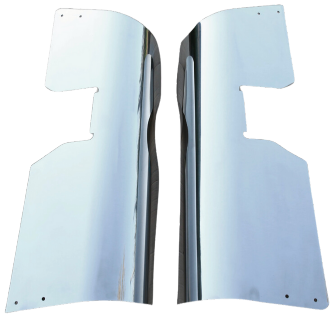
Option Code - 20305168

Reduces the sun glare. Enhances the look. The visor is made from high quality cast acrylic and the brackets are made from black steel which are first zinc-coated and then powder painted.

**VEPRO**

Fitting Time  
**1 Hour**





## DAF XG and XF Stainless Steel Mirror Guards

Option Code - SSMIR037

Stainless Steel Mirror Guards to suit DAF XG and XF.

Fitting Time  
**2 Hours**

# Coming Soon..



MirrorShield Mirror Guards To Suit DAF XB/XD/XF/XG/XG+



Coming Soon

## DAF XB MirrorShield – Super Strong Mirror Guard/Protector

Option Code - MS037

MirrorShield is a super tough mirror guard, designed and engineered from the ground up to provide maximum protection to your mirrors, whilst maintaining both a lightweight construction and sleek aerodynamic design. Supplied as standard in 3 colours below.



Fitting Time  
**1 Hour**



Coming Soon

## DAF XD MirrorShield – Super Strong Mirror Guard/Protector

Option Code - MS038

MirrorShield is a super tough mirror guard, designed and engineered from the ground up to provide maximum protection to your mirrors, whilst maintaining both a lightweight construction and sleek aerodynamic design. Supplied as standard in 3 colours below.



Fitting Time  
**1 Hour**



Coming Soon

## DAF XF, XG, XG+ MirrorShield – Super Strong Mirror Guard/Protector

Option Code - MS027

MirrorShield is a super tough mirror guard, designed and engineered from the ground up to provide maximum protection to your mirrors, whilst maintaining both a lightweight construction and sleek aerodynamic design. Supplied as standard in 3 colours below.



Fitting Time  
**1 Hour**



### LightFix DAF XG/XF/XD Sky Light 'Mini'

Option Code - A28705-1

Lightfix light bar, including wiring loom and LEDs pre-installed in the face of the bar. Made in Germany to the highest standards.



Multiple Finish Options



Fitting Time

**2 Hours**



### LightFix DAF XG/XF/XD Sky Light 'Wing'

Option Code - A28705-3

LightFix Light bar, including wiring loom and LEDs pre-installed in the face of the bar. Made in Germany to the highest standards.



Multiple Finish Options



Fitting Time

**2 Hours**



### LightFix DAF XG/XF/XD Sky Light 'H-Type'

Option Code - A28705-8

LightFix Light bar, including wiring loom and LEDs pre-installed in the face of the bar. Made in Germany to the highest standards.



Multiple Finish Options



Fitting Time

**2 Hours**



### LightFix DAF XG/XF Sky Light 'H-Max'

Option Code - A28705-9

LightFix Light bar, including wiring loom and LEDs pre-installed in the face of the bar. Made in Germany to the highest standards.



Multiple Finish Options



Fitting Time

**2 Hours**



### LightFix DAF XD (With Aero Bumper) Front Liner 'N'

Option Code - A28741-6

LightFix Light bar, including wiring loom and LEDs pre-installed in the face of the bar. Made in Germany to the highest standards.



Multiple Finish Options



Fitting Time

**2 Hours**



## LightFix DAF XG+/XG/XF Front Protect 'Big Nordic'

Option Code - A28760-3

LightFix Light bar, including wiring loom and LEDs pre-installed in the face of the bar. Made in Germany to the highest standards.



### Multiple Finish Options



Fitting Time

**2 Hours**



## LightFix DAF XG+/XG/XF Front Liner 'N'

Option Code - A28741-1

LightFix Light bar, including wiring loom and LEDs pre-installed in the face of the bar. Made in Germany to the highest standards.



### Multiple Finish Options



Fitting Time

**2 Hours**



## LightFix DAF XG+/XG/XF Rear Light

Option Code - A28715-2

LightFix Light bar, including wiring loom and LEDs pre-installed in the face of the bar. Made in Germany to the highest standards.



### Multiple Finish Options



Fitting Time

**2 Hours**



## LightFix DAF XG+/XG/XF Rear Light

Option Code - A28743-1

LightFix Light bar, including wiring loom and LEDs pre-installed in the face of the bar. Made in Germany to the highest standards.



### Multiple Finish Options



Fitting Time

**2 Hours**



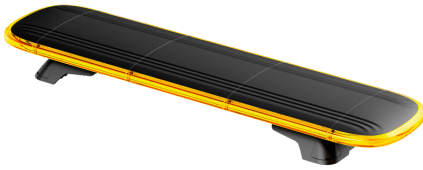
## UltraLEDs Utah Full Oval Spotlight, White/Amber DRL, 3 year warranty

Option Code - ULEDUTAH

The style that the UltraLEDs Utah spotlight gives your vehicle with its dual white and amber position light, full ultra-bright LED beam and sleek design will make you melt!



Fitting Time  
**2 Hours**



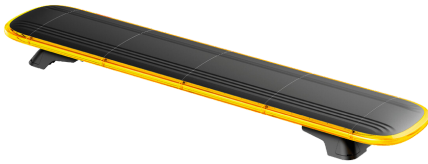
## 800mm UltraLEDs Horizon Low Profile LED Beacon lightbar, Reg65, ECE Approved

Option Code - ULED800

The newest generation in beacon lightbars has landed from UltraLEDs. Horizon brings you the latest in LED technology, packaged into an ultra slim, super sleek chassis that's just 20mm thin!



Fitting Time  
**2 Hours**



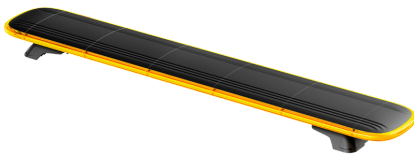
## 1000mm UltraLEDs Horizon Low Profile LED Beacon lightbar, Reg65, ECE Approved

Option Code - ULED1000

The newest generation in beacon lightbars has landed from UltraLEDs. Horizon brings you the latest in LED technology, packaged into an ultra slim, super sleek chassis that's just 20mm thin!



Fitting Time  
**2 Hours**



## 1200mm UltraLEDs Horizon Low Profile LED Beacon lightbar, Reg65, ECE Approved

Option Code - ULED1200

The newest generation in beacon lightbars has landed from UltraLEDs. Horizon brings you the latest in LED technology, packaged into an ultra slim, super sleek chassis that's just 20mm thin!



Fitting Time  
**2 Hours**



## 2 Head LED Strobe/Warning Light, Amber, 12/24v

Option Code - ULEDSTB2

Power: 18W 6pcs 3W SMD LEDs - Dimensions: 100 x 28.5 x 11.9mm -  
Voltage: 10-30V DC - Flash Pattern: 12 flash modes



Fitting Time  
**1 Hour**



### 4 Head LED Strobe/Warning Light, Amber, 12/24v

Option Code - ULEDSTB4

Power: 36W 12pcs 3W SMD LEDs - Dimensions: 100 x 28.5 x 11.9mm - Voltage: 10-30V DC - Flash Pattern: 19 Flash Modes



Fitting Time

**1 Hour**



### DubbelBrander Amber Lens, Amber Indicator Light, Full LED

Option Code - 46350274-LED

Double Brander / Dubble Burner Full LED Indicator Light. Complete with bulb holder



Fitting Time

**1 Hour**



### DubbelBrander Clear Lens, Amber White Light, Full LED

Option Code - 46350273-LED

Double Brander / Dubble Burner Full LED Indicator Light. Complete with bulb holder



Fitting Time

**1 Hour**



### Hadley 19" Round Airhorn. H00856ECE. Air Horn.

Option Code - 80500017

Top Quality Hadley Airhorn with support arm



Multiple Finish Options



Stainless Steel Black Powder Coated

Fitting Time

**2 Hours**



### Hadley 22" Round Airhorn. H00855ECE. Air Horn.

Option Code - 80500016

Top Quality Hadley Airhorn with support arm



Multiple Finish Options



Stainless Steel Black Powder Coated

Fitting Time

**2 Hours**



### Hadley 26" Rectangle Airhorn. H00978ECE. Air Horn.

**HADLEY**

Option Code - 80500021

Top Quality Hadley Airhorn with support arm

Fitting Time  
**2 Hours**



### Hadley 29" Rectangle Airhorn. H00977ECE. Air Horn.

**HADLEY**

Option Code - 80500023

Top Quality Hadley Airhorn with support arm

Fitting Time  
**2 Hours**



### Hadley 37.5" Round Airhorn. H00868ECE. Air Horn.

**HADLEY**

Option Code - 80500019

Top Quality Hadley Airhorn with support arm

Multiple Finish Options



Stainless Steel



Black Powder Coated

Fitting Time  
**2 Hours**



### ProTough Seat Covers to suit DAF NGT/XF/XG/XG+

**PRO  
TOUGH**

Option Code - PT5248-NGTXFXGXG+

ProTough, Super hard wearing seat covers are the only option when it comes to professional grade protection for your seats and interior. The double stitched construction and tough material make them your ultimate friend against dirt and grime in your cab.

Fitting Time  
**30 Mins**



## The Kuda Fleet Division Difference

Every commercial fleet in the UK is driven by its own values on safety, reliability, punctuality, value and driver retention. In some ways this makes every fleet the same, but mostly each fleet and its management are entirely different. From the traffic office to the workshops, from tracking systems to vehicle makes and models, we understand that not every company has the same requirements. Whilst we can't help run your day to day operations we can ensure the specification of your new vehicles in one which will suit your operational requirements, budget and most importantly, ensure the drivers, which are the staple of your operation are able to do their work in the most comfortable, efficient and safer manner as possible.



## From Tender to Delivery

1



### Initial Specification

Our team will take the time to work through your existing tender specification with your chosen dealer and ensure that all of your requirements are met. We can also meet with you to discuss any new technologies or items which could aid in improving your operation or saving money on your existing specification.

2



### Factory Delivery Direct to Kuda

Working closely with your dealer we will organise for your new vehicles to be delivered from the factory directly to our facility. The vehicles will be carefully checked by our experienced engineers to ensure your specified equipment can be mounted and the vehicles are the correct Type and Variant expected.

3



### Additional Items Expertly Installed

Once your vehicles have been checked in and the specification agreed, our in-house team of engineers will proceed with the install of your additional equipment. Ensuring the positioning and operational functionality are to your exact requirements.

4



### Vehicle Checked and Approved

Following the install of your equipment our internal Quality Control process will ensure each component is checked and signed off. The vehicles are then passed for Type Approval and a Stage 2 Certificate of Conformity issued for each one by our in-house Type Approval team.

## Install Pre-Registration - Bill with the vehicle



All of our fitments are of course covered under Stage 2 Type Approval, meaning you can rest assured whatever you specify has been fitted not only to the vehicle manufacturers guidelines, but also fully compliant with all European and Domestic Type Approval legislation and regulations. This clearance from the VCA enables us to issue certificates of Conformity and modify your vehicles prior to registration. The main benefit of this for fleets (other than peace of mind) is that any additional equipment and fitments are able to be billed with the total cost of the vehicle from the dealer prior to the truck being registered and PDI'd.



## Kuda Fitting Service

Our team of trained, mobile engineers are available across the UK to install over 90% of the products we offer, on-site, at your premises.

They are fully equipped in a modern fleet of vans, with the full compliance training and insurance. Our engineers can travel almost anywhere in the country (pre-booking required), either bringing the products to be fitted with them, or meeting products previously delivered by our carriers.

Currently we only offer our mobile fitment service for products supplied by us here at Kuda.

## How much does it cost?

Well, it's a very simple calculation, in addition to the labour costs of the product fitment (please call us for a fitment quotation) we charge a simple £1.00 (Exc. VAT) per mile travelled to and from the job. Below is a map containing examples of travel rates to some central locations.

## Mileage Calculation Examples

Fitting mileage is calculated using Google Maps. Start point is at IP7 7HA (Kuda UK), end point is the fitting location post code.

