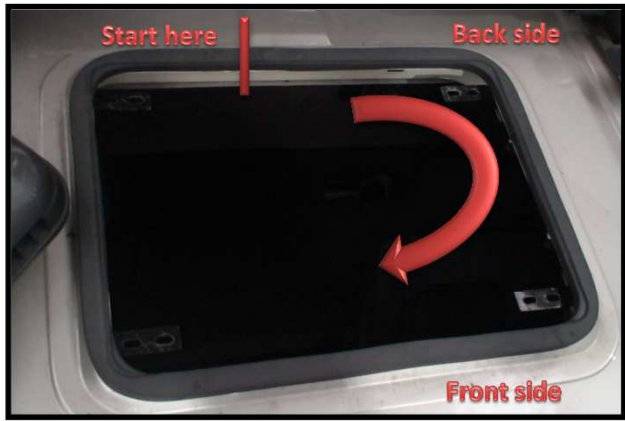


1- Remove the lid of the hatchway of the truck and the rubber (the original rubber can be used as a sealing system).

2 - Remove the dust and dirt around the hatchway.

3 - Start to glue the rubber that comes with the roof cooler with the self sticker faced to the cabin from the middle of the back side, surrounding all the hatchway hole.



4 - When you finish to glue the rubber, verify if the joint is totally closed, without any gap to avoid the entrance of water inside of the cabin.



5 - Install in the left and right side of the hatchway the fixing supports, using the original screws.

Note that depending on the model of the truck, the shape of the support can vary.



6 - Place the roof cooler on the top of the cabin. Be sure the screws of the roof cooler fit the fixing support.



7 - The screws could be fixed all in the outside hole of the fixing support , or in the inside hole. This depends on the truck model and size of the hatchway. In this example we are using a Scania truck.



8 - Add to the screws the washer 5/16 and a M8 self stopping nut , to fix the roof cooler to the fixing support.



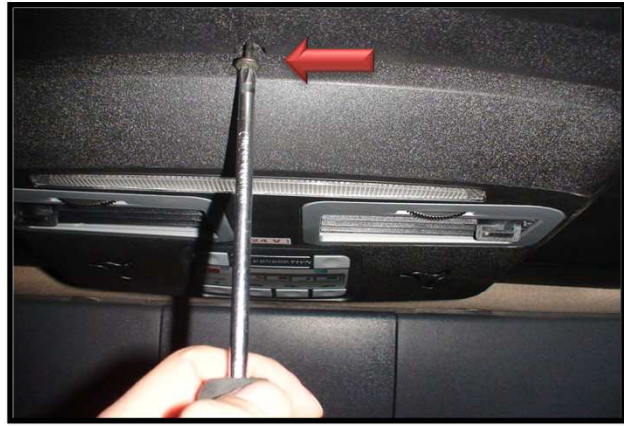
9 - Inside of the cabin, add the frame that comes with the roof cooler pressing it against the panel till you hear a "click" sound.



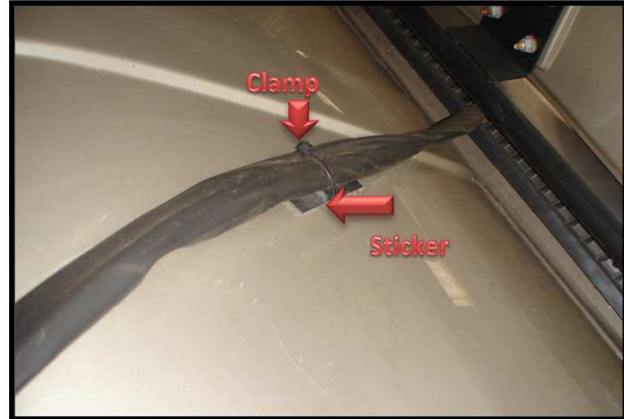
10 - To fix the frame to the truck roof, add a screw in the front part of the panel, where there is a place done for that.



11 - Add another screw in the back part also to fix the frame in the panel.



12 - Outside of the cabin, the harness wire together with the hoses will follow to the rear of the cabin. This should be fixed to the cabin using a sticker and a clamp T50R.



13 - The same procedure must be done in the back part of the cabin till the harness wire and hoses reaches the water tank.



14 - Reaching the water tank, the hoses should be connected to the water tank (returning hose on the top and injection hose in the bottom), as well as the electrical connections with the injection pump and the water level sensor. The water tank has two lids. One that has a hole on it, should be placed in the top side of the water tank. The other, totally closed, should be place in the botto part of the water tank.



15 -Connect the returning hose (sticker with the word "retorno") in the insert of 1/4" in the top part of the water tank



16 - Verifiy if the hose went through all the insert.



17 -The other hose (longer) is the injection hose. It should be connect to the water pump, placed in the bottom part of the water tank.



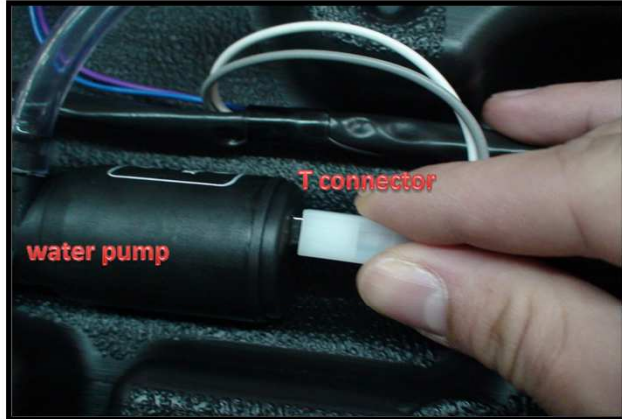
18 - Verify that this hose should be very well connected to avoid leakage.



19 - Connect the 2 ways connector (violet and blue wires) in the water level sensor, placed in the bottom part of the water tank, left side.



20 - The T connector (2 ways, with white and grey wires) should be connected to the water pump.



21 - The harness wire + hose should be fit in the cavity that goes through the whole water tank, to avoid to damage the wires and narrow the injection hose.



22 - The wires positive and negative should follow to the battery (power supply)



23 - The water tank can be fixed in two ways:

- a - Vertical , without using a ladder.
- B - Vertical, using a ladder.



**Vertical**



**Ladder**

24 - Use the supports to fix the water tank in the back part of the cabin



**Vertical**