

**S W O B L Ò**

***indelB***

**trouble shooting**

SW\_OBLÒ\_(12V)\_TS\_13-12-2018

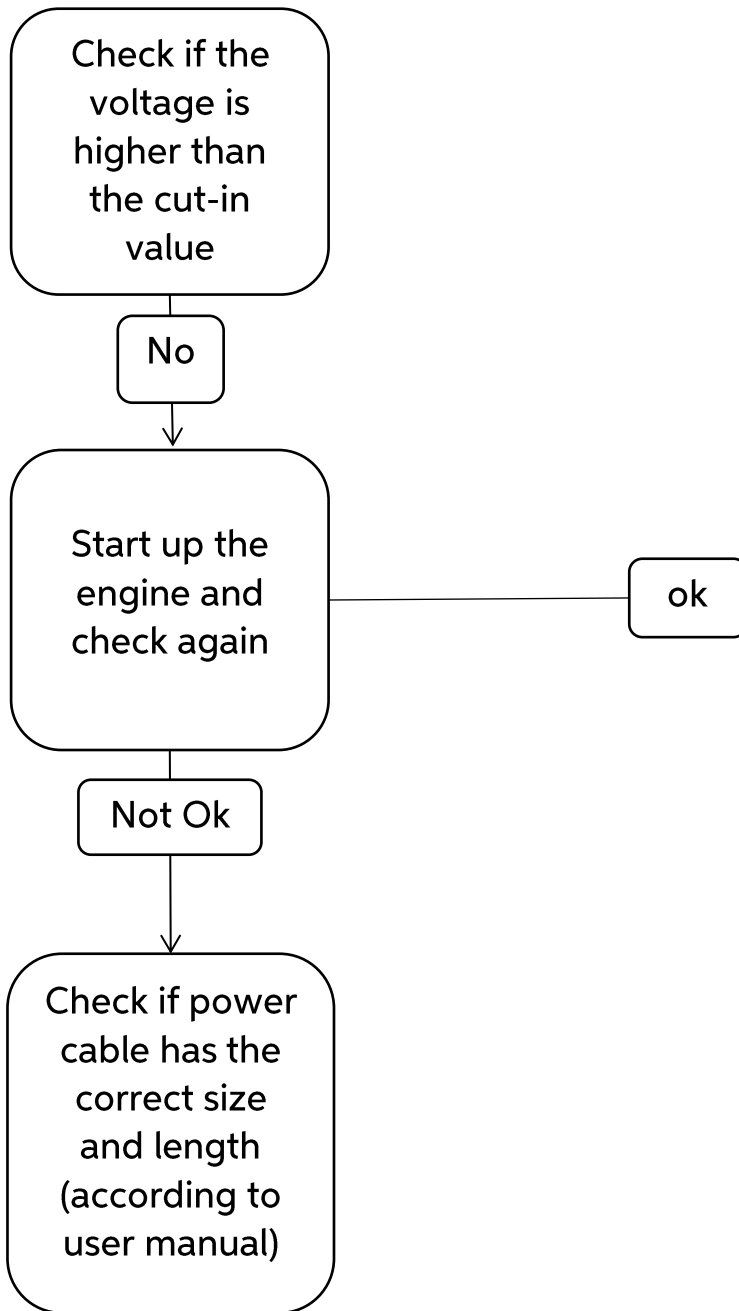
# SW OBLÒ

3	ERROR E1
4	ERROR E2
5	ERROR E3
6	ERROR E4
7	ERROR E5
8	ERROR E6
9	ERROR E7
10	ERROR E8
11 - 12	HOW TO REPLACE THE TEMPERATURE PROBE
13	HOW TO REPLACE THE CONDENSER FAN
14	HOW TO REPLACE THE EVAPORATOR BLOWER
15	HOW TO REPLACE THE ECU 1
16	HOW TO REPLACE THE ECU 2
17	HOW TO REPLACE THE DISPLAY
18	HOW TO REPLACE THE TILTING SENSOR
19 - 21	NON-REPORTED ERROR

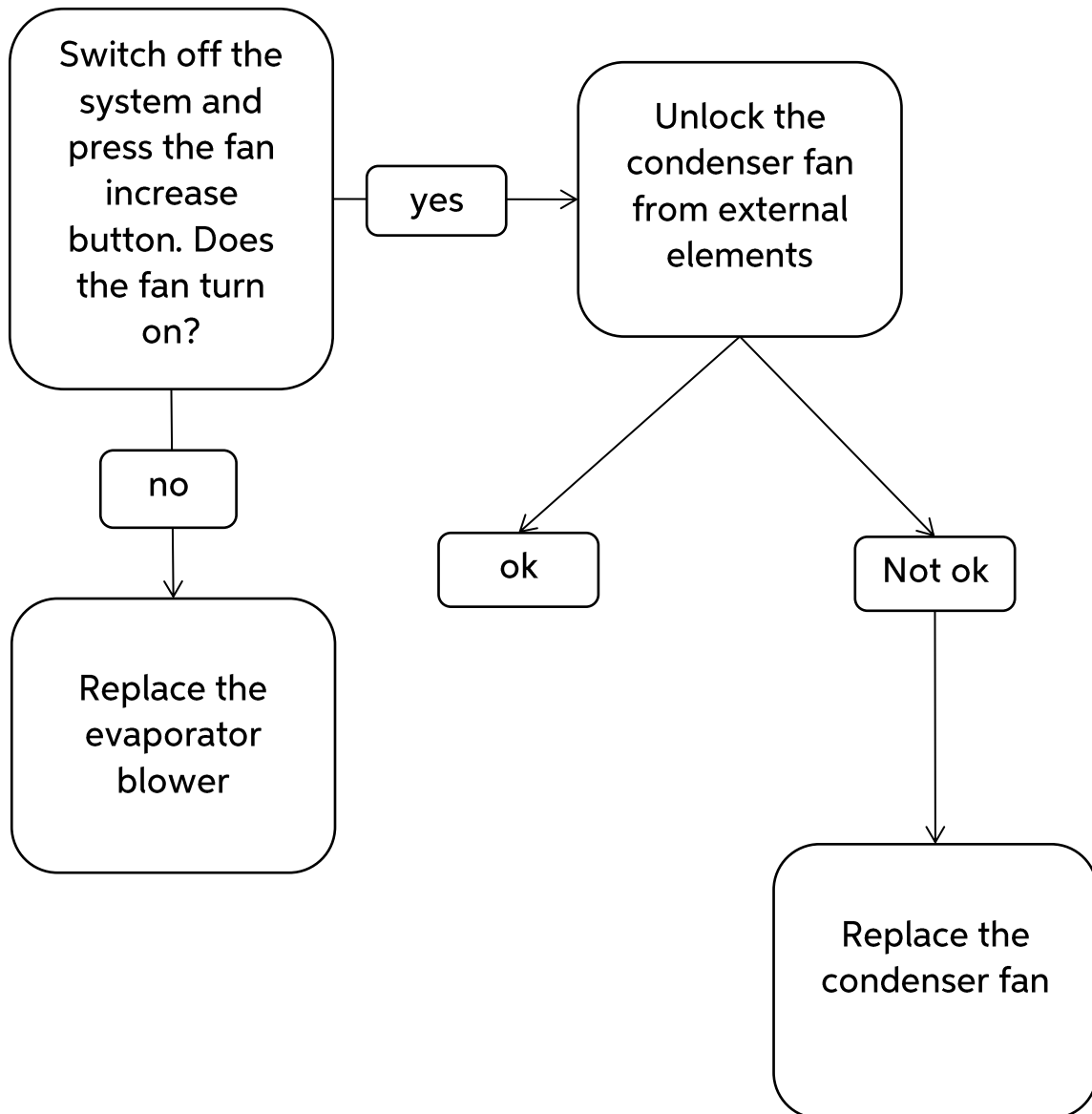
***indelB***

SW\_OBLÒ\_(12V)\_TS\_13-12-2018

- ERROR E1: Battery voltage



- ERROR E2: Fan over-current cut-out



- ERROR E3: Compressor locked

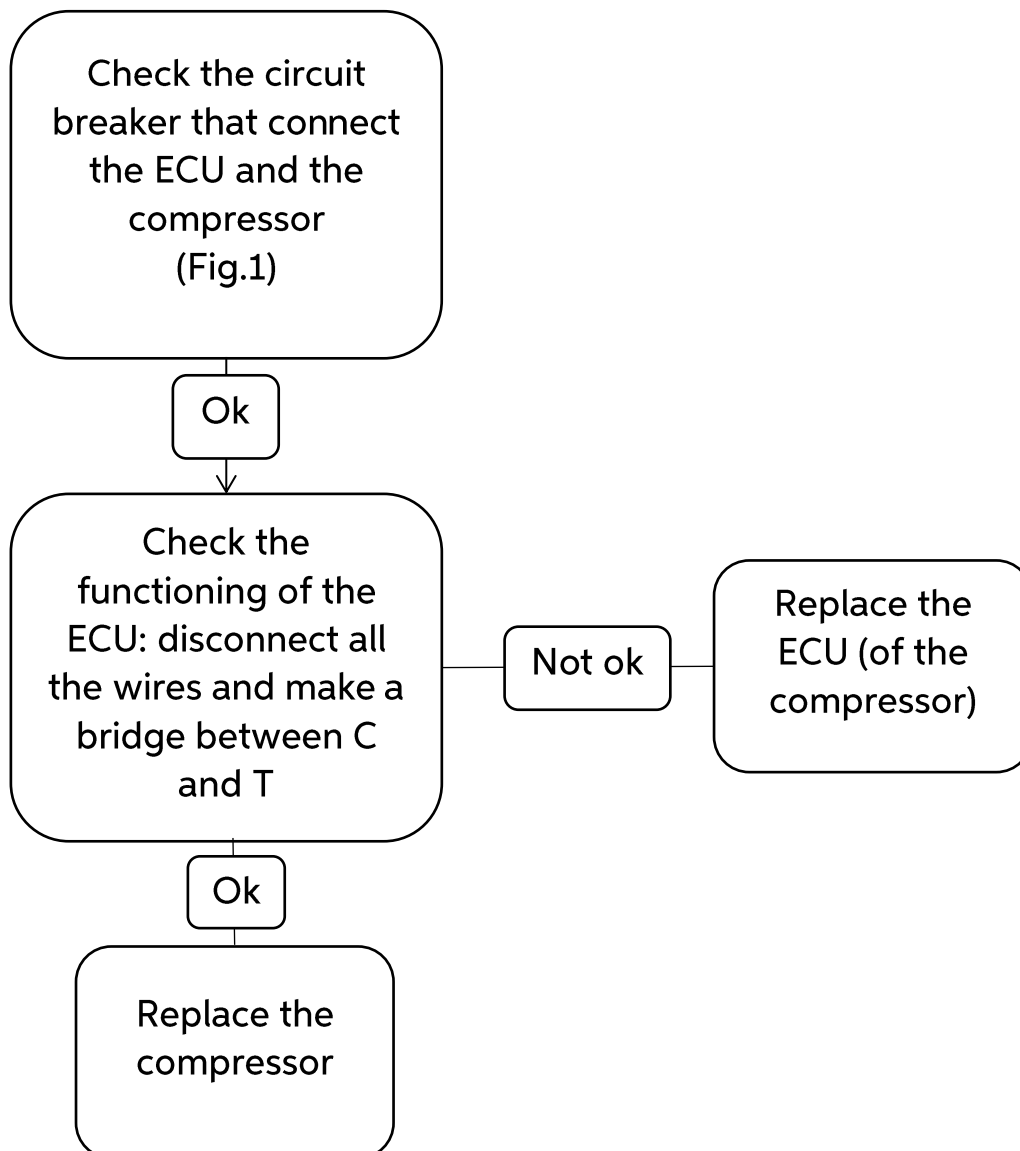
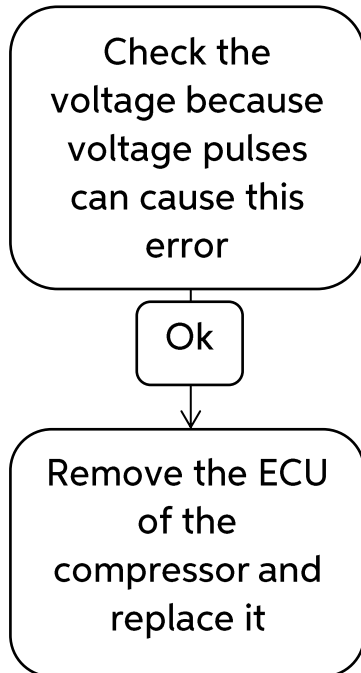
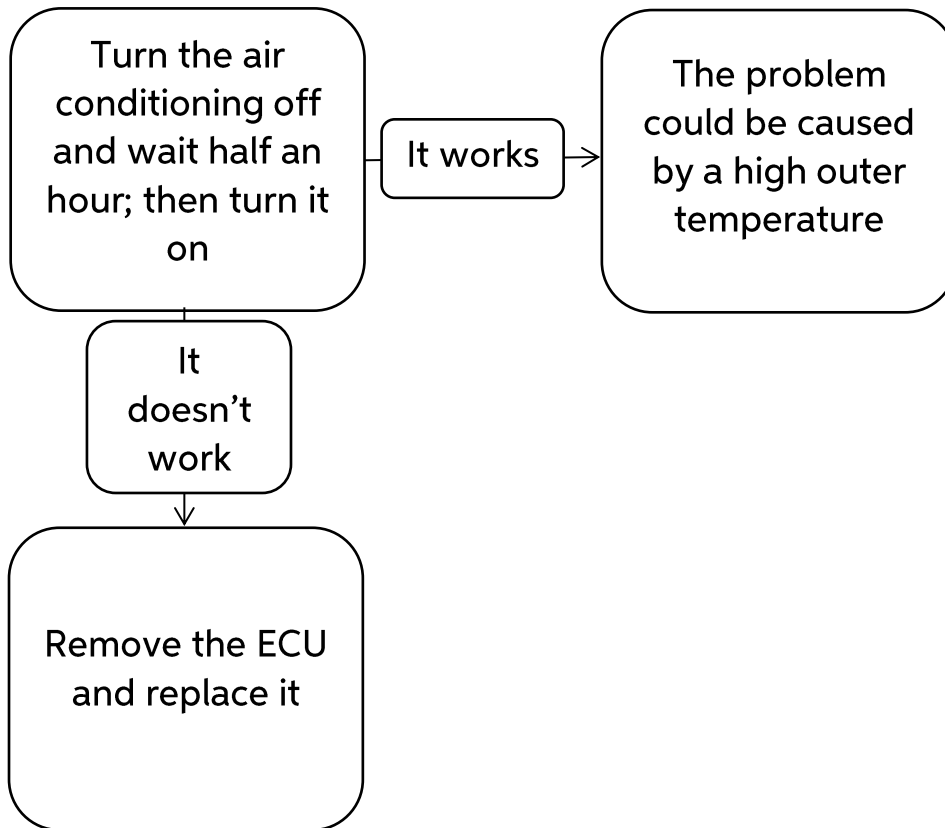


Fig. 1

- **ERROR E4: Minimum compressor rotation speed**



- **ERROR E5: Thermal cut-out of electronic unit**



- ERROR E6: Communication error

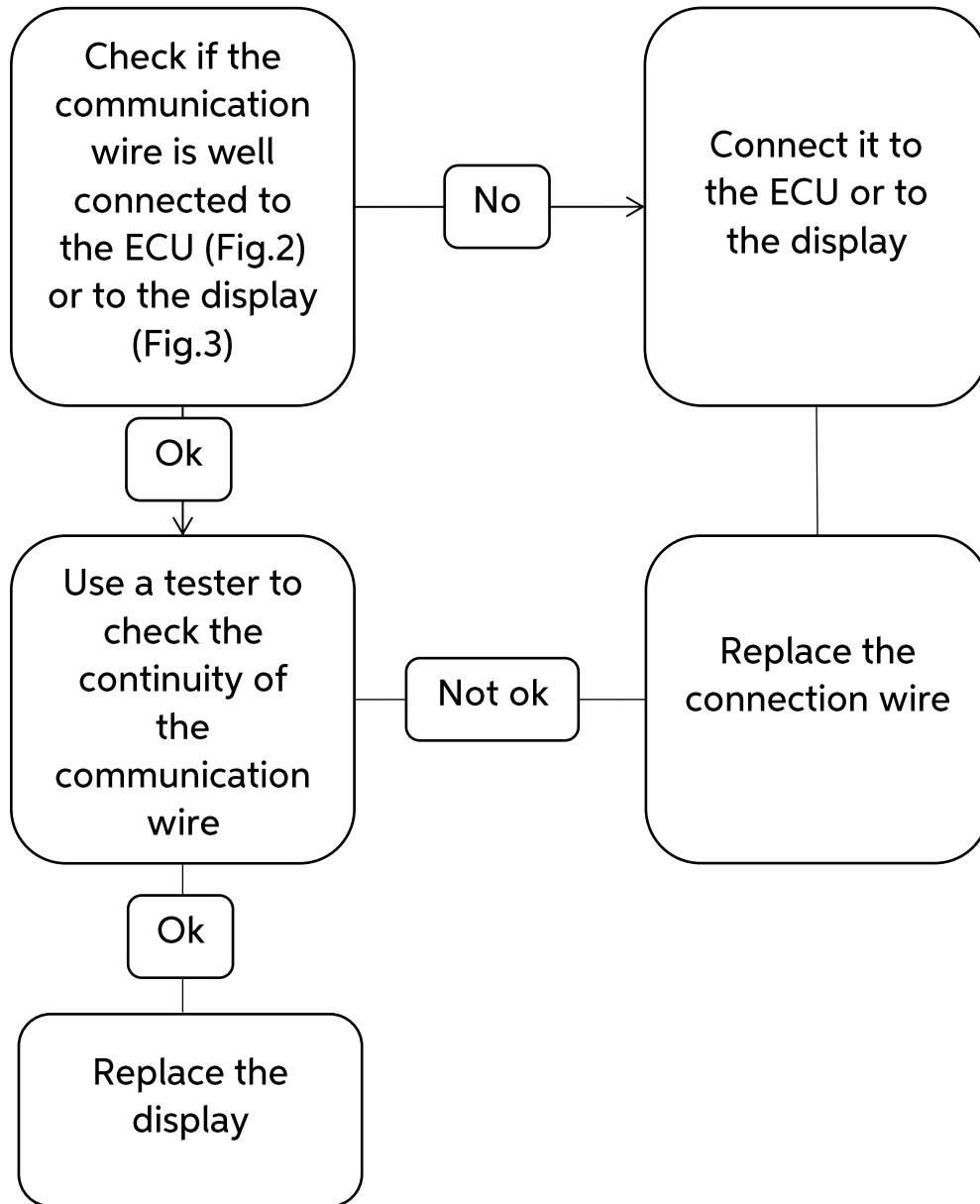


Fig. 2

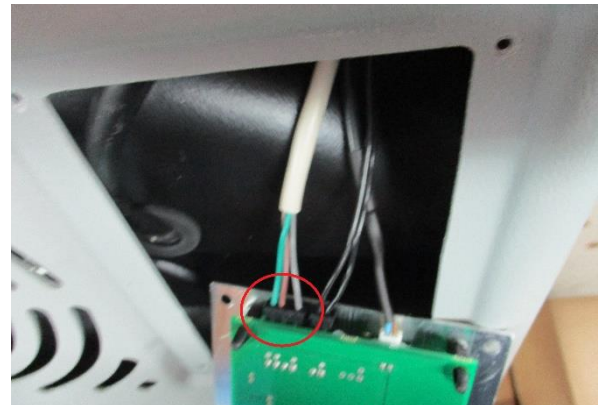


Fig. 3



- ERROR E7: Faulty temperature probe

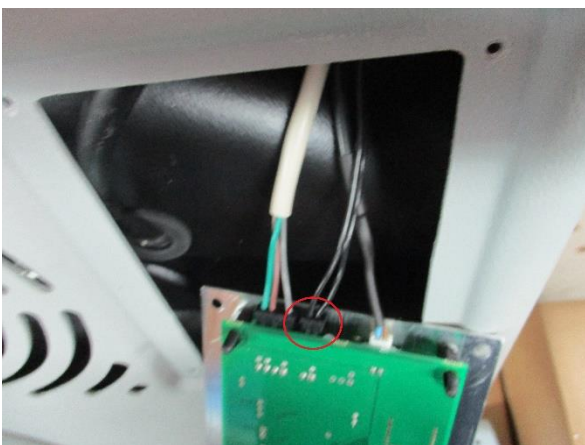
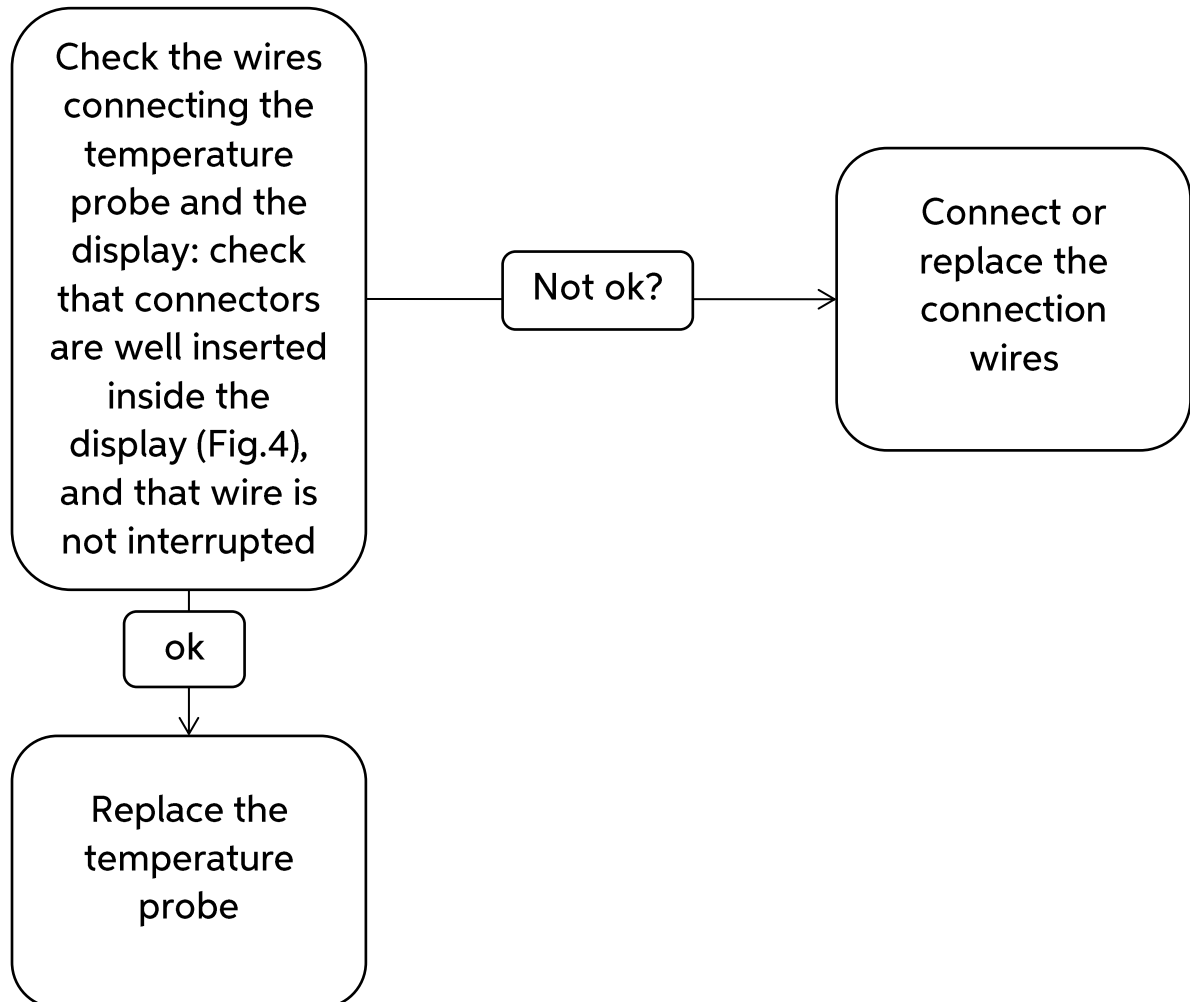


Fig. 4

● ERROR E8: Tilt

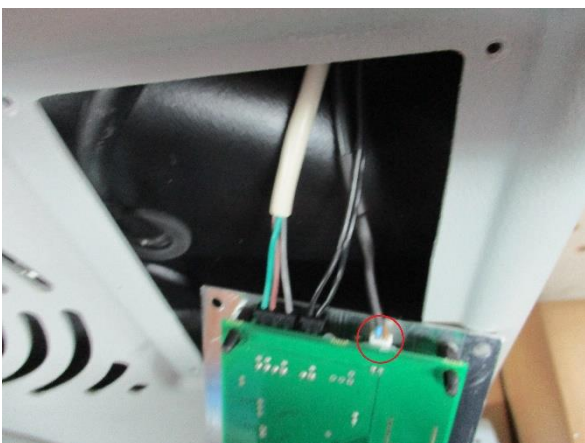
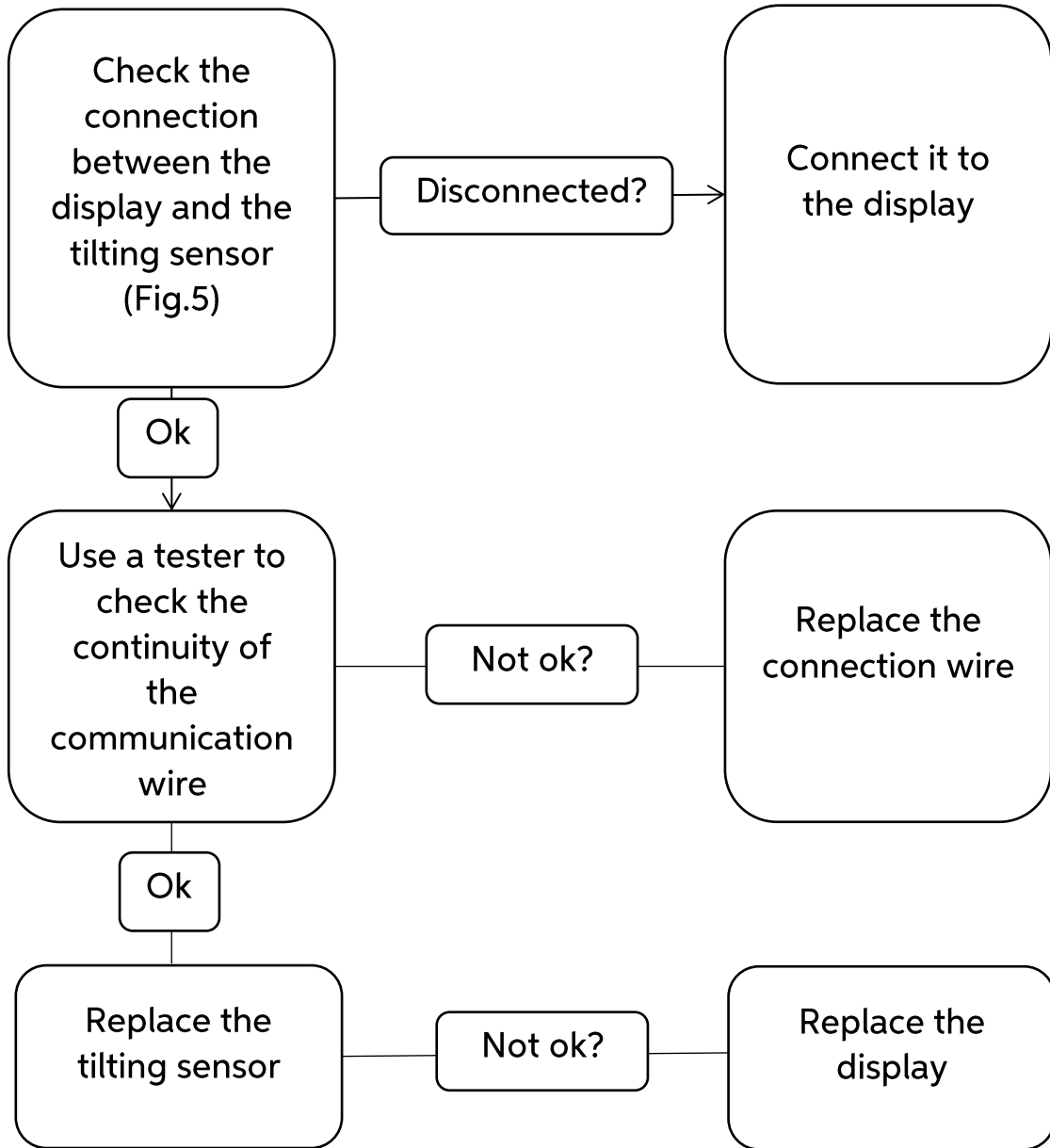


Fig. 5

# HOW TO REPLACE THE TEMPERATURE PROBE



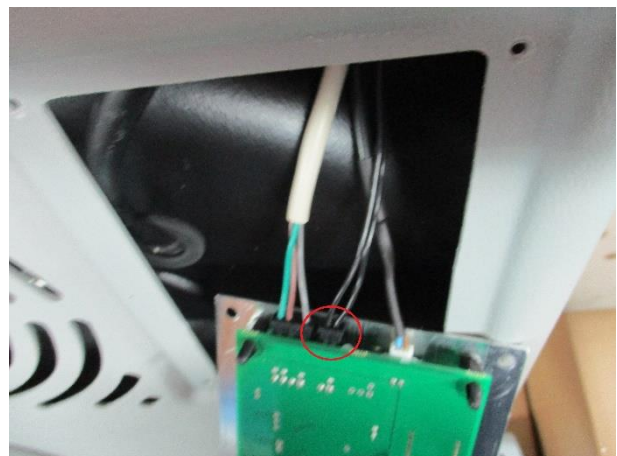
1. Remove the display's label



2. Unscrew the bolts fixing the control panel (4 screws)



3. Push upward and pull the control panel to remove it



4. Remove the probe's wire from the display



5. Unscrew the 4 screw-nut fixing the air diffuser



6. Remove the air diffuser



7. Remove the temperature probe and reverse the procedure to replace it



## HOW TO REPLACE THE CONDENSER FAN



1. Unscrew the bolts fixing the cover (9 screws)



2. Unscrew the bolts fixing the condenser fan



3. Remove the cover, disconnect the connection wire of the fan and reverse the procedure to replace it

# HOW TO REPLACE THE EVAPORATOR BLOWER



1. Unscrew the 4 screw-nut fixing the air diffuser



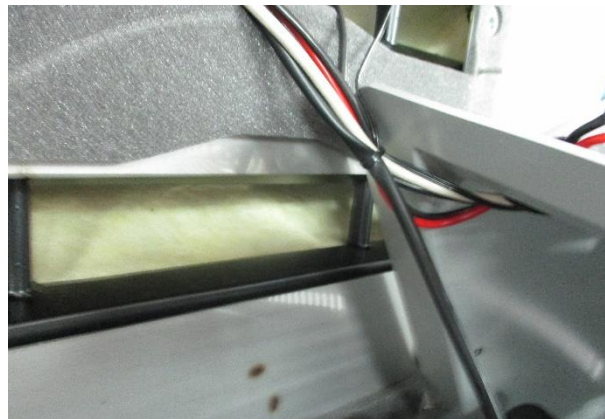
2. Unscrew the bolts fixing the carter of the evaporator blower (3 screws)



3. Remove the air diffuser



4. Unscrew the 3 bolts fixing the evaporator blower



5. Cut all the cable ties fixing the blower's wires and reverse the procedure to replace the evaporator blower

## HOW TO REPLACE THE ECU 1



1. Unscrew the bolts fixing the cover (9 screws)



2. Unscrew the 2 bolts fixing the ECU and disconnect all the wires connected to the ECU



3. Disconnect the circuit breaker that connect the ECU and the compressor, and reverse the procedure to replace the ECU



## HOW TO REPLACE THE ECU 2



1. Unscrew the bolts fixing the cover (9 screws)



2. Unscrew the 4 bolts fixing the ECU and disconnect all the wires connected to the ECU. Then replace the ECU with a new one



## HOW TO REPLACE THE DISPLAY



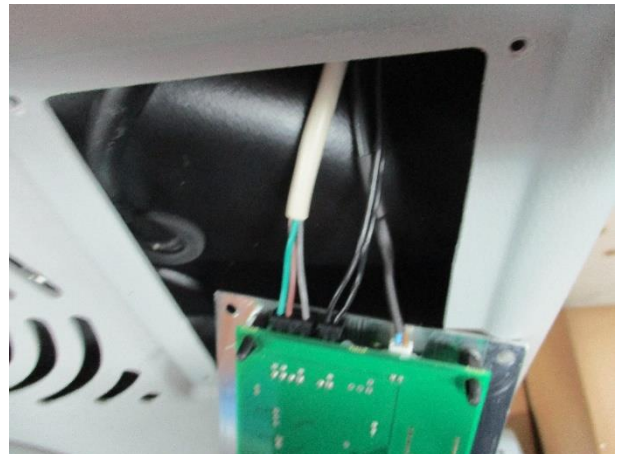
1. Remove the display's label



2. Unscrew the bolts fixing the control panel (4 screws)



3. Push upward and pull the control panel to remove it

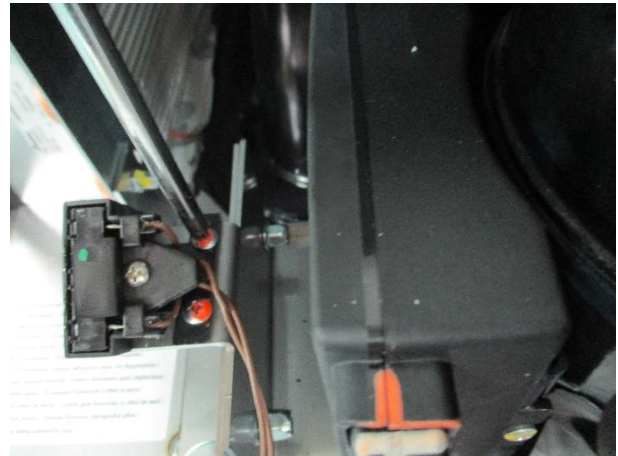


4. Disconnect all the wires from the display and reverse the procedure to install the new one

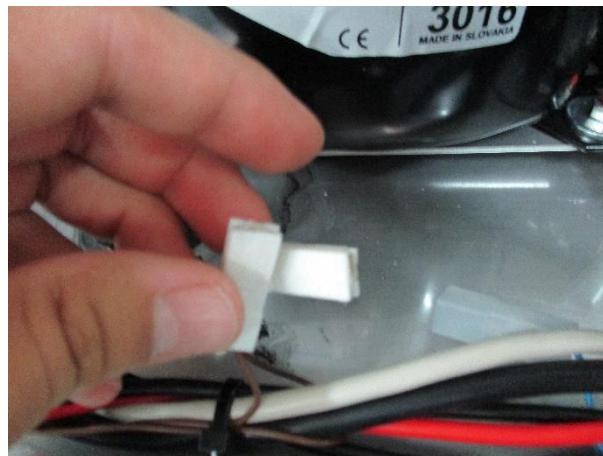
# HOW TO REPLACE THE TILTING SENSOR



1. Unscrew the bolts fixing the cover and remove it (9 screws)



2. Unscrew the 2 bolts fixing the system



3. Unscrew the wires; reverse the procedure to install the new one

## NON-REPORTED ERROR

There are two errors not reported on the display:

1) THE SYSTEM CANNOT BE TURNED OFF USING THE ON/OFF BUTTON:

The communication wire is completely disconnected.  
Connect the communication wire and press the ON/OFF button to turn off the system.

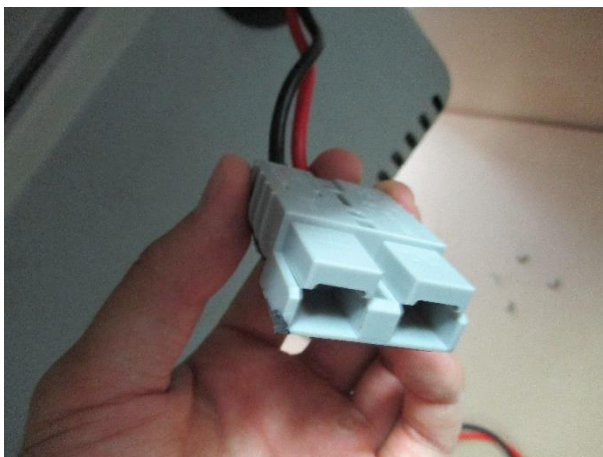


Connection wire

2) THE DISPLAY IS FUNCTIONING BUT THE COMPRESSOR AND THE FAN AREN'T

The voltage is too low, but his value is over the value that causes error E1.

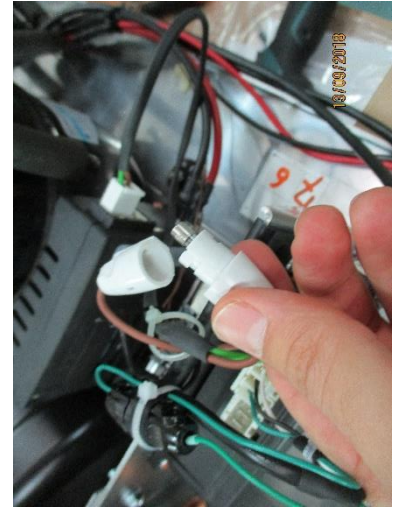
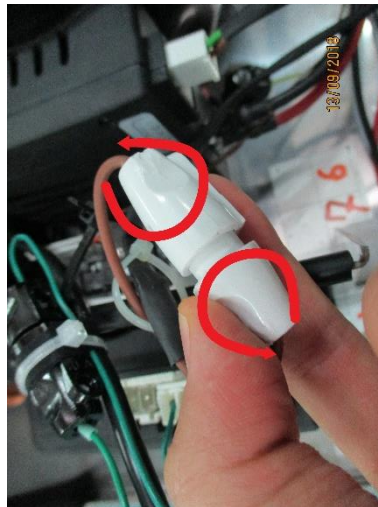
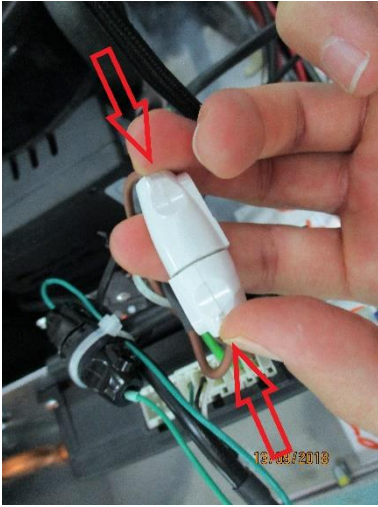
Disconnect the feeding harness, turn on the vehicle and then connect again the feeding harness.



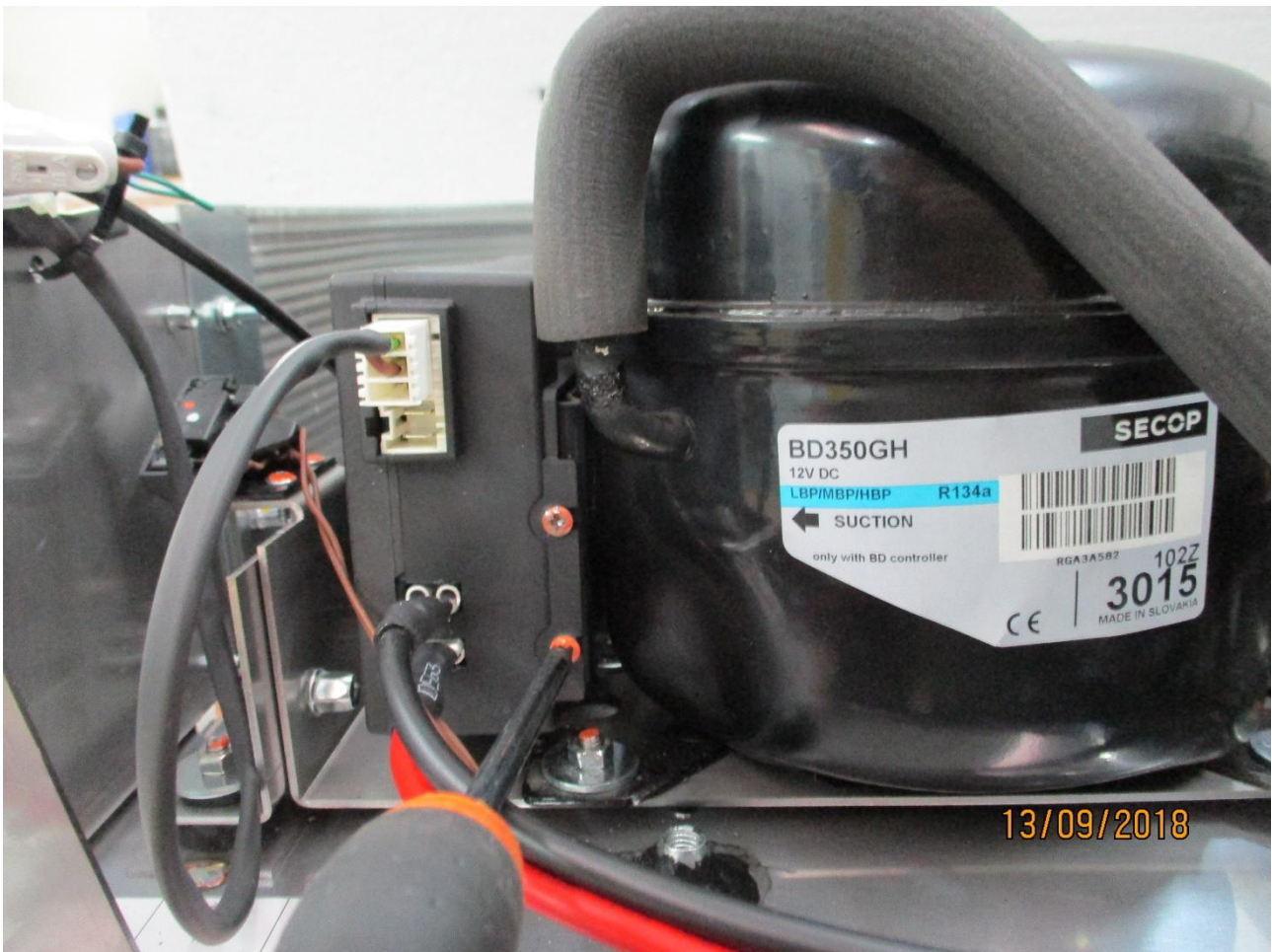
Plug of the feeding harness



### 3) THE FANS OPERATE, BUT THE COMPRESSOR NOT AND ERROR E3 ISN'T REPORTED

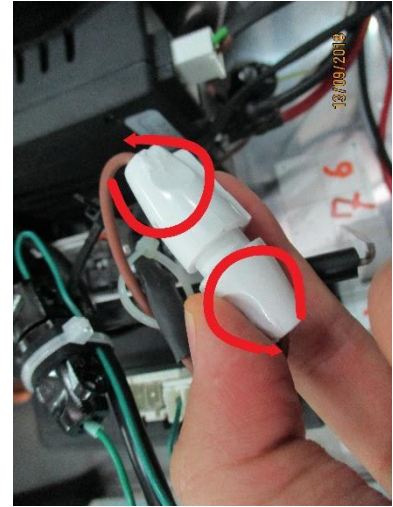
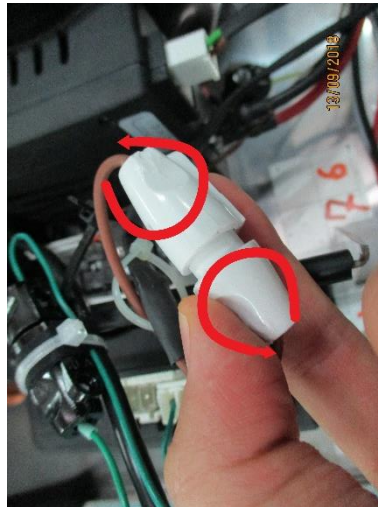
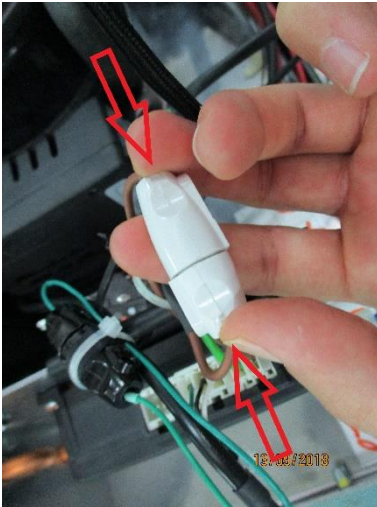


1) Push and rotate the fuse protection to open it. If the fuse is blown replace it, otherwise:



2) Replace the ECU 1 (of the compressor). If the problem persists, replace the compressor;

#### 4) THE FANS DON'T OPERATE AND ERROR E2 ISN'T REPORTED



1) **ATTENTION:** follow the pictures using the black protection box of the fuse  
Push and rotate the fuse protection to open it. If the fuse is blown replace it, otherwise.

2) Replace the display (pag.17), and if the problem persists:



3) Replace the ECU 2 (pag.16)