

Checkpoint®

The **Original** and the **Best**

[www.checkpoint-safety.com](http://www.checkpoint-safety.com)



# CONTENTS

Introducing	01
Checkpoint Original®	03
Dustite®	04
Dustite LR®	05
Checklink®	07
Trucklock®	08
Checklock SQ®	09
Checklock SQ® Size Guide	10
Safewheel®	13
Safewheel® Size Guide	14
Safewheel Twin®	15
Luglock®	16
Squirrel®	17
Rollock®	18
Checkthread®	19
RimRite®	20
Market Sectors	21
Contact Us	23

**FOR EVERY  
NUT THERE'S  
CHECKPOINT**

# INTRODUCING...

## OUR STORY

Checkpoint® are the innovators behind the original and world's first loose nut indicators. This simple safety solution was invented and developed by Checkpoint's Managing Director, Mike Marczynski.



Managing Director  
Mike Marczynski

**THE ORIGINAL AND THE BEST**

Checkpoint

The Checkpoint® story began during the 1990's, when Mike ran a successful chemical tank cleaning company which involved operating a fleet of vehicles, including HGVs. It was an incident involving a near wheel loss that led to the development of the Checkpoint®.

Checkpoint® products were sold and distributed widely in the UK. With an expanding team of experts, the company began to sell and distribute Checkpoint® products throughout the whole of the UK.

A wider International market was also targeted, with the support of the UKTI. Export sales grew from 2% of company turnover in 2006 to 50% by 2012.

Now recognised as an 'innovator' and 'expert' in his field, Mike has continually developed new ideas

and products. He is often sought out to provide bespoke solutions to specific problems concerning loose nuts from the commercial vehicle, bus and coach, and railway sectors to the mining, marine and agricultural industries. After all who better to solve a problem than the inventor of the solution?

Today, Checkpoint® are world leaders in the design, manufacture and sales of a range of quality indicators and retainers, exporting to over 90 countries across 6 continents including Europe, North and South America, Australia and South Africa. Checkpoint® now offer a range of products that have a wide scope of applications, covering all sizes and specifications in a global marketplace.

**Checkpoint. The Original and the Best.**



# Checkpoint ORIGINAL®

Checkpoint Original® provides a clear indication of nut movement. It was the first ever product of its kind on the global market to provide an indication of wheel nut movement on vehicles. Its application has since been introduced to different sectors in order to provide a solution to loosened nuts on pipelines, rail tracks and mining equipment.

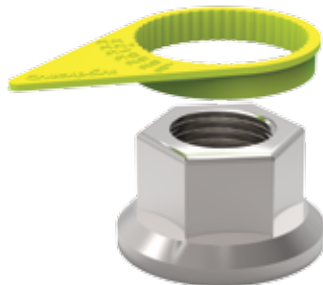
**Primary Functions:** To indicate nut loosening and overheating.

**Primary Benefits:** Improved safety of nut fittings - facilitates quick and easy visual checks and audits. A cost effective solution reducing maintenance costs and saving time.

**Sizes:** All sizes shown to the right of the page are measured across the flat (a/f) of the nut in mm. Short and medium arrow options are also available.

**Material:** High-grade virgin polymer.

**Melt Temperature:** 125°C (standard)  
165°C (high temperature)  
203°C (ultra high temperature).



INDICATES

MADE IN THE UK

mm

- 17
- 18
- 19
- 20
- 21
- 22
- 23
- 24
- 25
- 26
- 27
- 28
- 29
- 30
- 31
- 32
- 33
- 34
- 35
- 36
- 37
- 38
- 39
- 40
- 41
- 42
- 43
- 44
- 45
- 46
- 47
- 48
- 49
- 50

# Dustite®

Dustite® combines a nut loosening indicator and dust cap providing a clear indication of movement whilst also helping to protect the nut. Dustite® comes in the original hexagonal shape top or in the new limited size and colour dome shaped top.

**Primary Functions:** Combines the benefits of Checkpoint Original® indicators with the added advantage of keeping wheel nuts clean and free from the effects of water, road salts, chemicals and rust.

**Primary Benefits:** As all indicators, improves safety of nut fittings, offers a quick visual check/audit helping to reduce maintenance costs by saving time and money. Also provides an indication of overheating.

**Sizes:** All sizes shown to the right of the page are measured across the flat (a/f) of the nut in mm.

**Material:** High-grade virgin polymer.

**Melt Temperature:** 125°C (standard)  
165°C (high temperature).

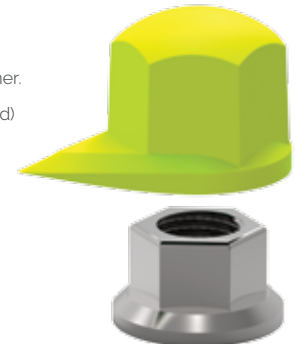


INDICATES

MADE IN THE UK

mm

- 17
- 18
- 19
- 20
- 21
- 22
- 23
- 24
- 25
- 26
- 27
- 28
- 29
- 30
- 31
- 32
- 33
- 34
- 35
- 36
- 37
- 38
- 39
- 40
- 41
- 42
- 43
- 44
- 45
- 46
- 47
- 48
- 49
- 50





# DustiteLR®

DustiteLR® (long reach) combines a nut movement indicator and dust cap. The LR is designed specifically for use on vehicle wheels with trims.

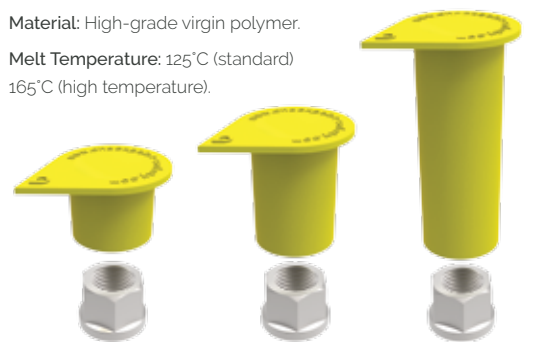
**Primary Functions:** As the original Dustite®, the DustiteLR® combines a wheel nut indicator and dust cap, but with a long reach barrel specifically designed for use on wheels with a trim or step ring.

**Primary Benefits:** Improved safety of nut fittings, offers a quick visual check/audit helping to reduce maintenance costs by saving time and money. Also provides an indication of overheating.

**Sizes:** All sizes shown to the right of the page are measured across the flat (a/f) of the nut in mm.

**Material:** High-grade virgin polymer.

**Melt Temperature:** 125°C (standard)  
165°C (high temperature).



- mm
- 17
- 18
- 19
- 20
- 21
- 22
- 23
- 24
- 25
- 26
- 27
- 28
- 29
- 30
- 31
- 32
- 33
- 34
- 35
- 36
- 37
- 38
- 39
- 40
- 41
- 42
- 43
- 44
- 45
- 46
- 47
- 48
- 49
- 50



\*Full range of colours available (subject to quantity)



MADE IN THE UK

\*for non standard barrel lengths please check for size and availability



# Checklink®

Checklink® is a dual purpose loose nut indicator with a retaining function.

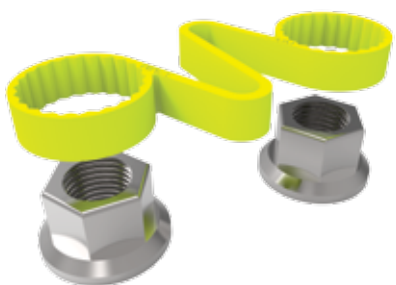
**Primary Functions:** To indicate nut loosening, nut over-heating and to provide a retaining function to reduce the likelihood of loose nuts.

**Primary Benefits:** Improved safety of nut fittings, facilitates quick and easy visual checks and audits. A cost effective solution reducing maintenance costs and saving time.

**Sizes:** All sizes shown to the right of the page are measured across the flat (a/f) of the nut in mm.

**Material:** High-grade virgin polymer.

**Melt Temperature:** 125°C (standard) 165°C (high temperature).



INDICATES AND RETAINS

MADE IN THE UK

mm

- 17
- 18
- 19 ●
- 20
- 21 ●
- 22 ●
- 23
- 24 ●
- 25
- 26
- 27 ●
- 28 ●
- 29
- 30 ●
- 31
- 32 ●
- 33 ●
- 34
- 35
- 36
- 37
- 38 ●
- 39
- 40
- 41
- 42
- 43
- 44
- 45
- 46
- 47
- 48
- 49
- 50

# Trucklock®

Trucklock® is the world leading commercial vehicle wheel anti-theft locking nut and key. One nut per wheel helps to deter and prevent wheel and tyre theft. Each key has its own unique encryption and keys can be encrypted individually or alike for fleet needs.

**Primary Functions:** To help deter and prevent commercial vehicle wheel and tyre theft.

**Primary Benefits:** One nut per wheel deters or stops wheel/tyre theft. Simple to install, with no moving parts to corrode or jam. Each lock has a specially coded pattern milled into it that engages with the corresponding pattern on the Key/Adaptor tool. Fits most commercial vehicles from trucks to mining. Suitable for both steel & alloy wheels. Recommended fitting by use of a torque wrench to avoid possible risk of stud or nut damage from un-calibrated air guns. Trouble free protection and peace of mind.

**Sizes:** M22mm x 1.5 thread for 10 stud hub mounted disc wheels.

**Material:** High quality alloy steel hardened for strength & durability.



ANTI THEFT

NEW PRODUCT

# Checklock<sup>SQ</sup><sup>®</sup>

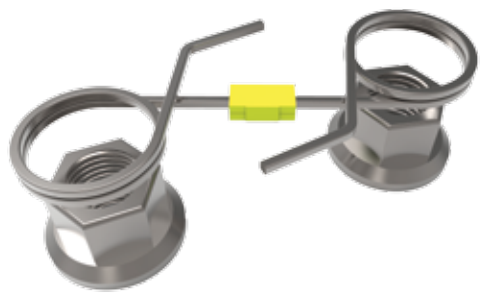
Checklock<sup>SQ</sup><sup>®</sup> helps to retain two adjacent nuts. Its coil-like structure reduces the likelihood of nuts loosening.

**Primary Functions:** Provides a retaining function, reducing the likelihood of nuts loosening.

**Primary Benefits:** Manufactured in square section stainless steel, it improves safety and offers a quick visual check reducing maintenance costs and saving time. In most cases the Checklock <sup>SQ</sup><sup>®</sup> can be fitted without any special tools. A cost effective solution reducing maintenance costs and saving time.

**Sizes:** Size guide shown on page 10.

**Material:** High quality premium Stainless Steel.



Stainless Steel

RETAINS

MADE IN THE UK

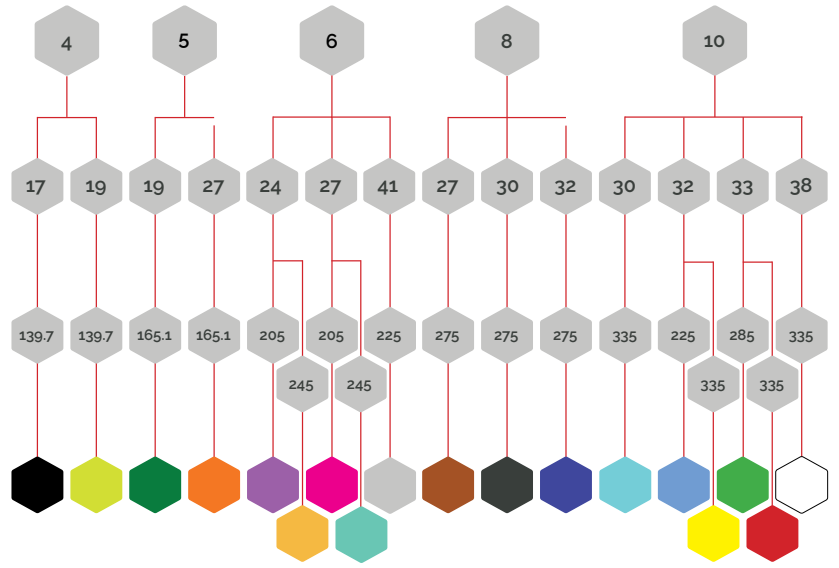
# Checklock<sup>SQ</sup><sup>®</sup> SIZE GUIDE

How many studs do you have?

Nut size (across the flats) mm

PCD (pitch circle diameter) mm

Colour of clip (as shown on product) specifies size



RETAINS







# Safewheel®

Safewheel® is a durable, reusable and simple to use wheel nut retaining ring, protecting nuts from damage.

**Primary Functions:** A one-step solution to providing a retaining function helping to reduce the likelihood of wheel nut movement.

**Primary Benefits:** A complete retaining cover for all wheel nuts that has the benefit of being visually attractive and pedestrian/cyclist friendly. Helps to prevent loss and damage of nuts providing improved safety. Is a cost effective solution saving time and reducing maintenance costs.

**Sizes:** Size guide shown on page. 13.

**Material:** High-grade virgin polymer.

**Operating Temperature**

Range: -40°C- +120°C.



\*Full range of colours available (subject to quantity)

RETAINS

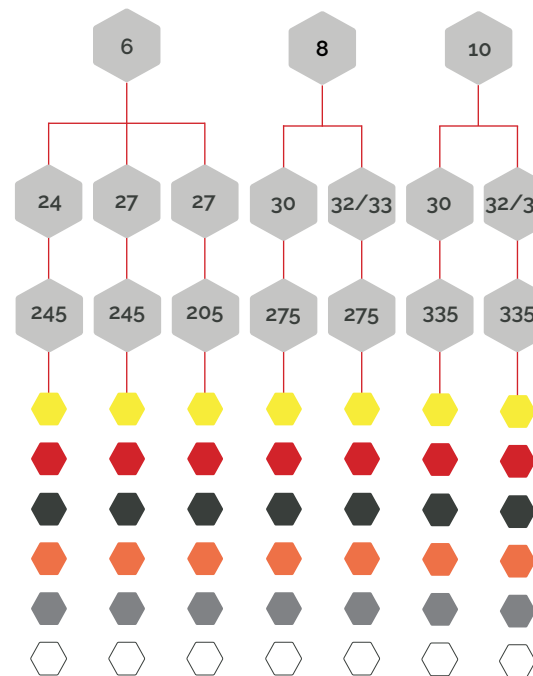
# Safewheel® SIZE GUIDE

How many studs do you have?

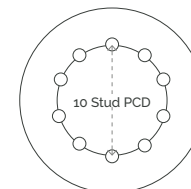
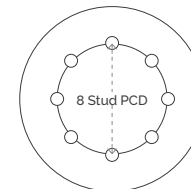
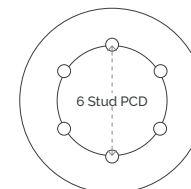
Nut size (across the flats) mm

PCD (pitch circle diameter)

Full range of colours available subject to quantity



Pitch Circle Diameter (PCD) explained...



Measure from the centre of any stud on the wheel to the centre of the stud directly opposite (mm).

RETAINS

# Safewheel Twin<sup>®</sup>

The Safewheel Twin<sup>®</sup> fits onto two adjacent wheel nuts. They are durable and reusable nut retainers that also protect nuts from damage.

**Primary Functions:** Provide a retaining function helping to reduce the likelihood of wheel nut movement.

**Primary Benefits:** A retaining cover for two adjacent wheel nuts that have the benefit of being visually attractive and pedestrian/cyclist friendly. Helps to prevent loss and damage of nuts, providing improved safety and reduced maintenance costs. Simple to fit and remove and a cost effective solution.

**Sizes:** Initially 32mm/10 Stud/335 PCD and 33mm/10 Stud/335 PCD.

**Material:** High grade virgin polymer.

**Operating Temperature**

**Range:** -40°C- +120°C.



\*available in silver grey, yellow, red and royal blue - full range of colours available subject to quantity

RETAINS

NEW PRODUCT

# Luglock<sup>®</sup>

Luglock<sup>®</sup> lug (wheel) nut retainer is designed for US spec wheel PCD's (pitch circle diameter). It is a durable, reusable and simple to use wheel nut retainer ring, protecting nuts from damage.

**Primary Functions:** A one step solution to providing a retaining function helping to reduce the likelihood of wheel nut movement.

**Primary Benefits:** A complete retaining cover for all wheel nuts that has the benefit of being visually attractive and pedestrian/cyclist friendly. Helps to prevent loss and damage of nuts providing improved safety. Is a cost effective solution saving time and reducing maintenance costs.

**Sizes:** Currently only 33mm available for a PCD (pitch circle diameter) of 285,75mm.

**Material:** Robust but lightweight polymer. UV stable with a high resistance to salts, grease and other roadside chemicals.



\*Full range of colours available (subject to quantity)

RETAINS

# Squirrel®

Checkpoint Squirrel® is an innovative one piece wheel nut fixing ring that is easy to fit and can be installed in minutes, providing flexibility, extra safety and support.

**Primary Functions:** Part of a maintenance process that provides extra support to wheel nut fixing helping to safeguard against the possibility of wheel detachments.

**Primary Benefits:** No moving parts. Designed as a one piece unit that will not get clogged with road dirt and grime. Durable, re-useable and capable of working in a wide range of temperatures. The Squirrel® is resistant to oil, detergents and most chemicals. Suitable for both front and back wheels. A simple and user friendly safety device. No special fitting tools required.

**Sizes:** 10 stud, 8 stud and 6 stud for European trucks and buses. 6 stud mini (for medium sized vans).

**Material:** Light weight, Impact resistant, engineered high quality nylon.

**Operating Temperature Range:** -30°C - 250°C.



\*Standard Colour: Orange  
Other colours available upon request subject to quantity.  
NB this product can be painted over

RETAINS

MADE IN THE UK

NEW PRODUCT

# Rollock®

Rollock® wheel nut locking clamps are a simple safety solution that when fitted correctly, will help to keep wheel nuts in place reducing the potential of wheel loss and the risk of serious incidents.

**Primary Functions:** To help secure wheel nuts in place by fitting to adjacent pairs of wheel nuts.

**Primary Benefits:** Easy to fit by use of T-Bar style tool and plastic faced lump hammer. NB: ordinary steel lump hammers may damage the fitting tool. The specially designed fitting tool has a magnetic clamp holder which helps place the Rollock correctly over the pair of wheel nuts and has a depth stop that prevents the Rollock from being hammered in too far. They are easy to remove using conventional tools. They are made in different sizes and fit most commercial vehicles.

**Material:** Made from specially coated steel, hardened for strength, durability and resistance to corrosion. Rollocks are authorised for single use only.



Rollocks are authorised for single use only

RETAINS

NEW PRODUCT



# Checkthread®

The Checkthread® Kit is designed to facilitate the simple monitoring of wheel stud quality and stud hole integrity. It also determines the correct nut type to be used with a wheel.

**Primary Functions:** To monitor wheel stud quality and stud hole integrity.

**Primary Benefits:** Indicates whether wheel studs are of poor quality, stretched, damaged or ill-fitting, reducing the risk of accidents occurring.

**Kit Components:** Thread testers quickly highlight potential problems with the stud thread that aren't always obvious under visual inspection. SHET (stud hole elongation tester) identifies any elongation of wheel stud holes. Conical/Spherical tester determines the correct nut type to be used with a wheel.

**Sizes:** Thread testers in M18, M20, M22 and Scania or Volvo standard thread sizes. Stud hole elongation tool (SHET) in 21, 24, 26, 31, 32, 33mm.

**Material:** High quality premium Stainless Steel (Rimrite aligners). Glass filled Nylon (SHET/Conical/Spherical tester).



Stainless  
Steel

MADE IN THE UK

# RimRite® for Scania

RimRite® rim alignment kit (currently for Scania vehicles only).

**Primary Functions:** Correctly aligns Scania studs to precisely centre the wheel.

**Primary Benefits:** Prevents excess vibration to the wheel and reduces wear on tyres and suspension. RimRite® Kits help to reduce the risk of wheel nuts loosening and are re-useable and therefore cost effective.

**Kit Components:** The kit comprises of 3 re-usable precision-engineered stainless steel aligners. Scania standard Checkthread. SHET (stud hole elongation tester) identifies any elongation of wheel stud holes. Conical/Spherical tester determines the correct nut type to be used with a wheel.

**Sizes:** (SHET) in 21, 24, 26, 31, 32 and 33mm. and Scania standard Checkthread.

**Material:** High quality premium stainless steel (RimRite aligners), glass filled nylon (SHET/Conical/Spherical tester).



Stainless  
Steel

MADE IN THE UK

# MARKET SECTORS

## TRANSPORT

This is the original and primary sector for the Checkpoint® range of products. It is estimated that more than a third of all commercial vehicles in the UK have Checkpoint® products fitted.

Main application applies to wheel nut safety and maintenance within the Commercial Vehicle sector, including Bus & Coach, Haulage, Trailer, Truck, Waste, Skip, Recycling and all other heavy duty vehicles.

## RAILWAY

Rail and track safety has recently become a major issue for rail networks both in the UK and abroad. Checkpoint® has been at the forefront of developing products specific to this sector.

Checksafe® for example is a range of coloured loose nut or bolt movement indicators whose applications include switches, crossings, signals, fishplates and rolling stock brackets or any nut or bolt fixing that is safety-critical, should it loosen undetected. Bespoke products are currently being tested by Southern Rail and Network Rail in the UK.

## MINING

Checkpoint® has been working closely with major mining and fleet maintenance companies in the UK and Internationally and has had much success in recent years, playing a key role in maintenance procedures on mining vehicles and equipment that are running 24 hours a day, 7 days a week.

Checkpoint® products are not only used as loosening and overheating indicators on wheels but also on vital nuts attaching hydraulic and moving components which are constantly running at varying temperatures enduring strain and vibration which greatly increases the chances of nuts loosening. The use of Checkpoint® products decreases the likelihood of costly vehicle repair and machine breakdown.

## INDUSTRY

There are a number of diverse potential applications within industrial sites. They range from the steelwork supporting factory buildings, overhead lifting equipment and cranes to large fixed and/or moving manufacturing machinery where prolonged vibrations during operation can be particularly susceptible to loose nut problems.

The oil and gas industry is a particular area where nuts are critical to safety and structural integrity, particularly if subjected to harsh or testing environments. Checkpoint® have developed indicators to form part of site maintenance procedures helping to make such machinery safer, easier to inspect and reducing both time and resources needed for on-going maintenance.

## AGRICULTURE

Vehicles and machinery within this sector are blighted by the same problems of loose nuts in exactly the same way as normal road going vehicles and industrial machinery. The Checkpoint® range of indicators and retainers offer a very useful addition to existing safety procedures.

With a wide variety of different wheel and machinery assemblies in the agricultural market Checkpoint® have developed a number of different nut retention and indicator products to meet these particular requirements.

## MILITARY

Checkpoint® have worked closely with the UK (MOD) and foreign military establishments to develop and refine products suitable for this very specific and safety critical sector. Checkpoint® offers a variety of different polymers for the various applications, all of which are fully approved by the UK MOD and NATO with relevant part numbers. Products have also been produced to military colour specification including drab olive grey, green, black and silver grey.

In 2011, following a detailed development programme a new material was added to the range for use in the most demanding of Military applications. This engineering grade polymer is resistant to extremes of temperature, ranging from below -20°C to over +200°C. It is also chemically stable against a wide range of materials and fully water resistant.

# CONTACT US

## General Enquiries

[sales@checkpoint-safety.com](mailto:sales@checkpoint-safety.com)

+44 (0)15242 71200

Wendy Vaughan | [wendyv@checkpoint-safety.com](mailto:wendyv@checkpoint-safety.com)

UK National Sales Manager

Mike Marczynski | [mikem@checkpoint-safety.com](mailto:mikem@checkpoint-safety.com)

Managing Director

Alex Deremez | [alex@checkpoint-safety.com](mailto:alex@checkpoint-safety.com)

International Sales and Commercial Director

Dr. Vivien Hacker | [vivienh@checkpoint-safety.com](mailto:vivienh@checkpoint-safety.com)

Export Manager - German Speaking Markets

Léa Daloz | [lead@checkpoint-safety.com](mailto:lead@checkpoint-safety.com)

Sales Manager - French Speaking and Benelux Markets

Agnes Szafranska | [agness@checkpoint-safety.com](mailto:agness@checkpoint-safety.com)

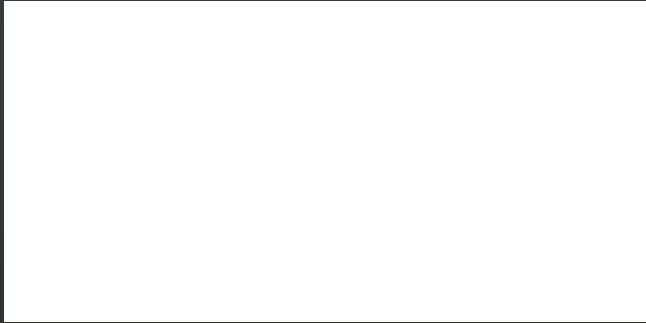
Marketing Coordinator

Jamie Turner | [jamiet@checkpoint-safety.com](mailto:jamiet@checkpoint-safety.com)

Sales Development Engineer







info@checkpoint-safety.com  
[www.checkpoint-safety.com](http://www.checkpoint-safety.com)